

# Scaffolding Software

## iScaf - Design v 10.2

# New Features

---

September 2022

---



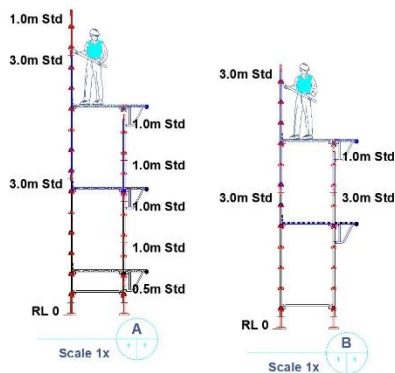
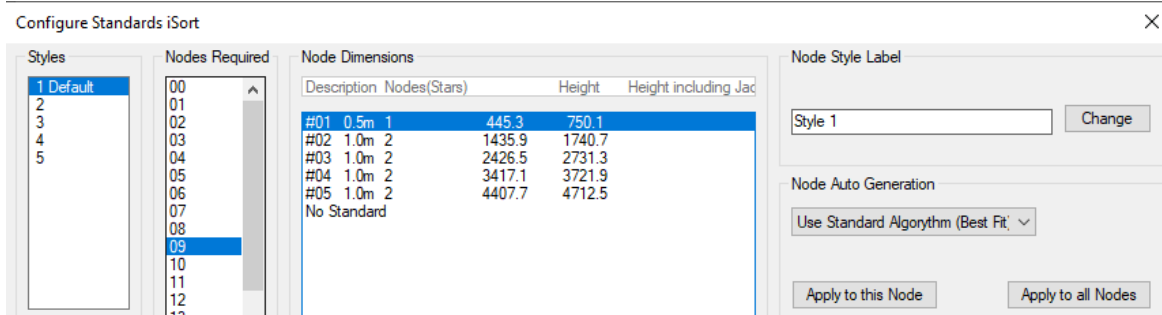
Copyright © Scaffolding Software 2010-2022



## iScaf – Design: Version 10.2

September 2022

- **\*\*SIGNIFICANT FEATURE\*\*** iScaf now contains the NEW iStandards feature. The iScaf Standards Control feature allows you to have total flexibility with selecting the vertical standards by job that you would like allocate for any height. This is in addition to the existing method of intelligently allocating standards based on stagger or non-staggered verticals.



Screen capture Above: Shows part of the new iStandards feature.

Screen capture Left: Shows an example of the totally flexible choice of Vertical Standards being used in a drawing.

Available in Imperial or Metric measurements.

- **\*\*SIGNIFICANT FEATURE\*\*** More incremental improvements to the iLift feature. The Lift control feature allows you to control the height of every lift and the components at every lift of scaffold.
- The two main items above have been major improvements to the flexibility of the iScaf system as requested by our hundreds of iScaf users. The user documentation for the above items have been updated accordingly.
- Full Support for Toppers, Stage Standards or Deck Adapter.
- Re-Using the PDF insert scale setting feature for multiple PDF files.
- Improved alignment and placement of tube hand rails.
- Improvements to scaffolding ARCs in a vessel or building structure.
- Fixed an error in the calculation of Transoms in some situations for Ringlock modules.

## iScaf – Design: Version 10

May 2022

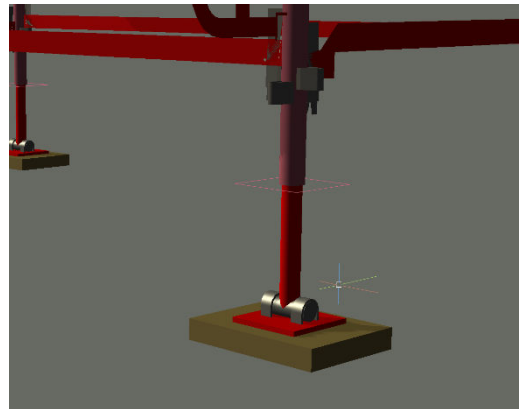


- Full 3D tie bars are now available
- Solid 3D wall ties are now available
- Default colour scheme changed and improved for all iScaf 3d elements if colours were not specified manually
- Colours assigned to standards are assigned to standard layer allowing fully colour coded standards

*Left image: full 3D wall tie and tie bar representation*

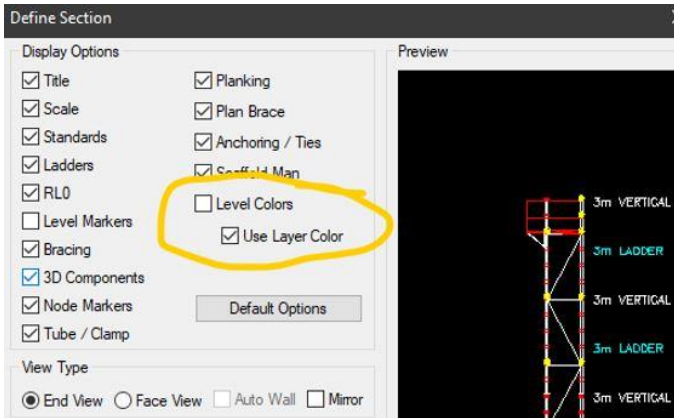
- Stretcher Stairs now have the option of full triple handrails all the way around including the 3<sup>rd</sup> handrail for the actual risers.
- Swivel Jacks have been improved on the 3D drawing and can now be selected as needed.

*Right image: Full 3D swivel jacks*



- New visual renderings in iScaf are available – Ask us how you can create such amazing scaffold drawings and images with iScaf 10.

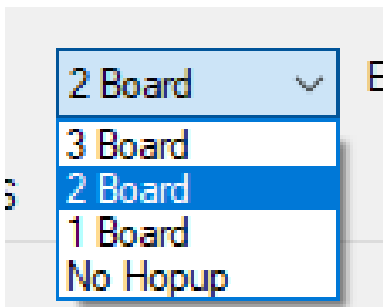
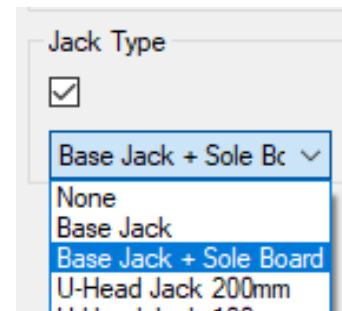
*Left image: A sample detailed rendering of scaffolding with iScaf*



- Colors in the Section elevations may use Layer Colours option to color code standards in section elevations. You may use the new level colors and layer colors options in the 'define section' dialogue boxes.
- Colors assigned to standards are now correctly assigned to standard layers, allowing color coded standards.

Left image: Layer colors option in 'Define Section'.

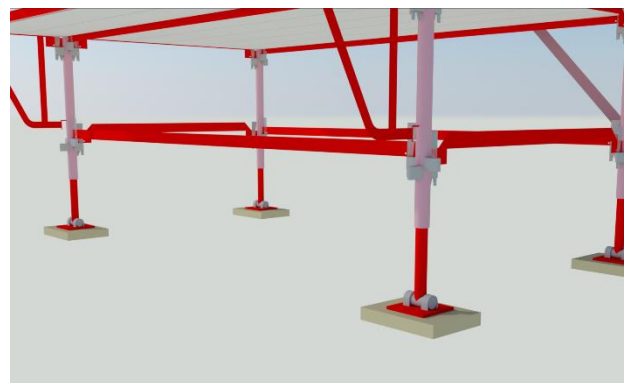
- Updated auto "end bay" type feature.
- Template Description display improvement.
- Users can provision heavy duty transoms regardless of whether or not there is a deck at that level.
- Support for 'None' as a jack option in the edit wall command and extra setup.



- Support for 'No Hopup' in Extra Side Dialog Levels
- The new CC copy command is awesome for power users

- Added ability for extra infills to be used in side brackets based on deck type
- Update for elevated bottom scaffold with no jacks selected created bays with offset ring/node points on standards now improved
- Update for scaling image for corner block creation e.g., Logos etc
- New Standard node points

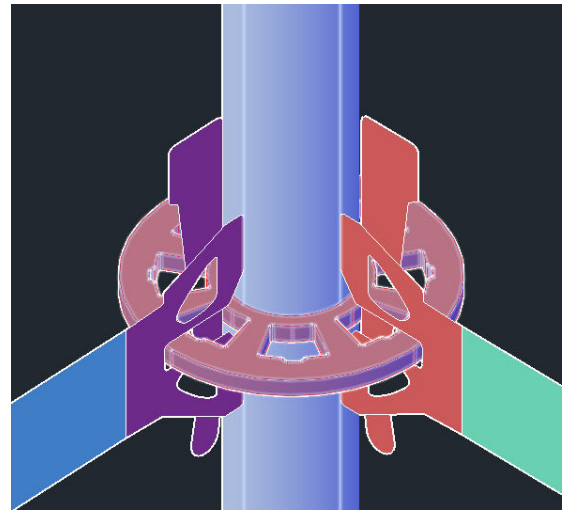
Right image: More 3D rendering in iScaf.



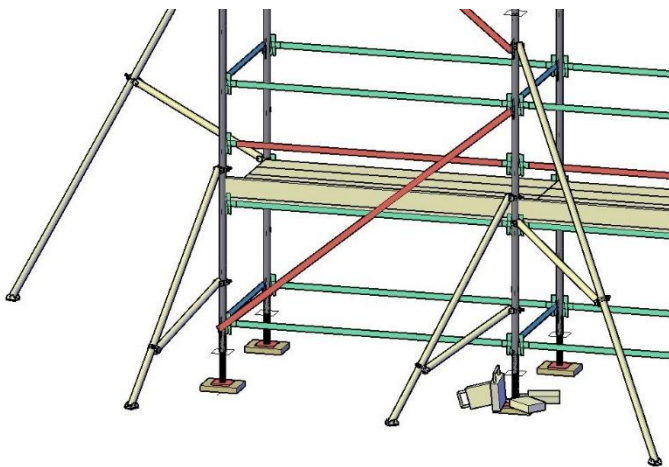
October 2021

iScaf with the new 2022 drawing engine includes improved PDF handling and significant 3D detail.

- Full Lift Control by Scaffold Bay and Scaffold Run
- More detail with 3D VPressing, Rosettes and Cuplock Cups
- Improved 3D colors for all components for an improved scaffold view
- Drawings can have new Textures using the new “Materials” option at the top right corner of the ribbon to be used with the shaded Visual Style
- New improved printing detail allowing the users to select the iScaf HiRes CTB Pen assignments file
- Improved PDF handling, including speed and greater compatibility with more PDF files with unusual fonts and elements
- The new No Jacks option improves the way iScaf can handle hanging Scaffold
- Improved 3D acceleration performance utilising DirectX 9 and 11, 3D graphics cards.
- Improved performance on redraw and pan zoom, utilising multicore processors to increased advantage and Intelligent display optimisation
- Confirmed compatibility with Windows 11
- Improved multi monitor display handling
- Improved support for 4K high resolution displays
- Higher resolution output files to PDF with up to 1200dpi raster and line accuracy



*Above: Example Layer Rosette*



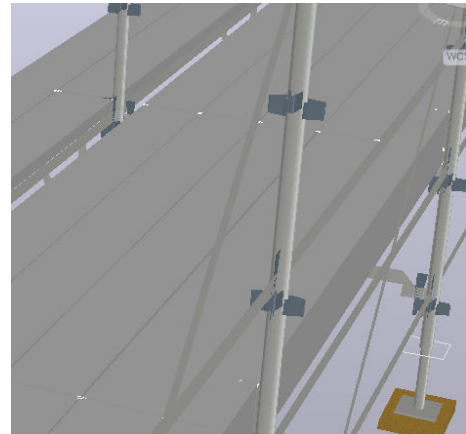
*Above: Example Outrigger and Counterweight blocks*

- Improved support for iScaf RealView
- Updated Insert Block feature for parts in the bonus folder also added to the iScaf Ribbon
- iScaf 3D Outriggers or Raker Ties for Anchoring and Stabilising the Scaffold added to bonus folder
- Quick measure feature measures items easily near the mouse cursor, such as distance between parallel lines, arcs to verify dimensions
- iScaf drawings built with other user modules cannot be opened and will exit gracefully
- Ability to assign heavy duty bearers/transoms/ledgers even with no deck specified for the lift
- Paper Layout watermarks has improved rendering

## More about Lift Control:

Lift Control has been extensively enhanced. Lift control allows you to specify a custom vertical sequence of building scaffold bays independent of iScaf's usual rules for insertion of ledgers, transoms, handrails, decks, etc. It allows for a completely bespoke sequence of scaffolding components to be defined for a particular bay height, and has been present within iScaf for a number of years.

Lift control has been enhanced by allowing more than a single custom scaffold definition to be defined, with up to 20 different custom definitions to be defined and chosen from and used within a drawing. The Lift control 'styles' can be incorporated within your module to standardise the layouts across an organisation, but also allow modification on a drawing by drawing basis.



It is most commonly exploited for creating scaffold solutions that have some peculiarities in their design that allow for a layout that is more easily modified during the building process to fit the changing needs of the build.

Such as dropping by a half metre or one node for the top deck once eaves are on a residential building. Another example might be a custom deck layout that your organisation frequently uses for its projects that might sometimes automatically build bearer/transoms where they obstruct deck clearance heights using iScaf's normal bay building rules.

Lift control allows you to move away from all of iScaf's standard logic for building bays lifts and switch to lift control for individual walls. Create new build layouts with complete control over all options. This is available in the lift control section and also the Edit Wall Details feature.



## iScaf – Design: Version 9

February 16, 2021

iScaf 9.0 drawings can now be converted to the interactive iScaf RealView system. Visit the [Scaffolding Software website](#) for more details.

December 23, 2020

*Right Image: iScaf 9 showing 3D solids in iScaf*

3D Components for Jacks, Base boards, Standards, Ledgers, Transoms, Hopups, Side Brackets, Corners, Decks, Toeboards, Tube, Bracing, Lap Boards, AI Stairs, Handrails and Stretcher Stairs.

Put 3D Components into their own layers for materials and textures by layer support for visual styles.

Textures and Layers can be saved with the configuration module style.

Build 3D and Sections now changes to 2D Wireframe to increase the build speed.

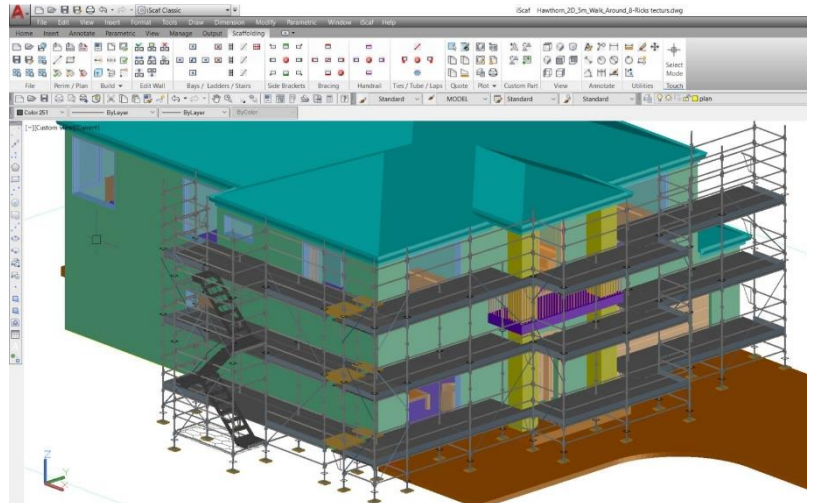
Different text styles are now available for different labelling for iScaf components.

Deck components are now solid so that they show up as separate boards with tiny gap for better visualisation.

Stretcher stairs are now included in the Length, Area, and Volume calculations. For Labour, the face of the stair is added. For Shade, the face and the ends are added.

Plotting in Background is now available to increase performance.

Double clicking a drawing from the file manager to open iScaf is more reliable.



## iScaf – Design: 8.1 (April 2020)

### Build 4548

March 30, 2020

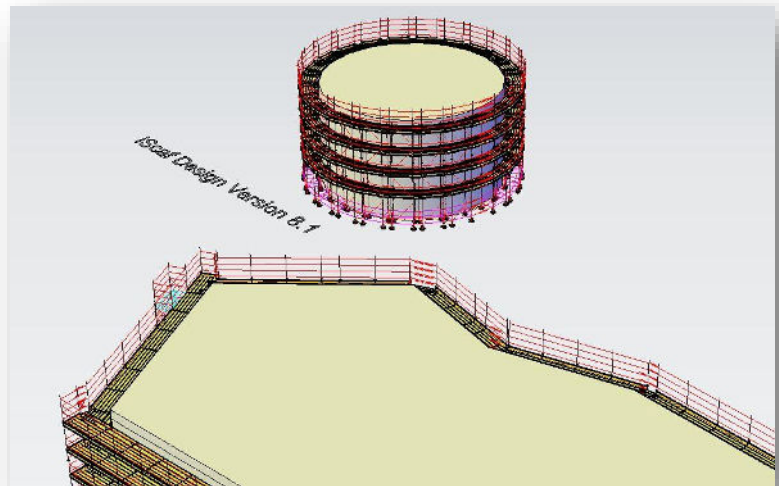
Create solid building command now operates on tanks as well as perimeters.

*Right Picture. Our customers think the visual styles available via our new training videos and documentation can really improve the presentation of iScaf.*

*This helps generate the iScaf presentation style as shown in the picture. More details below.*

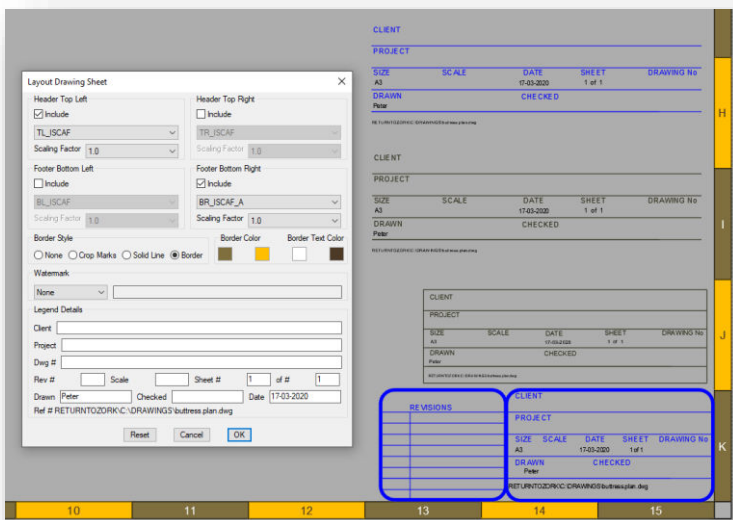
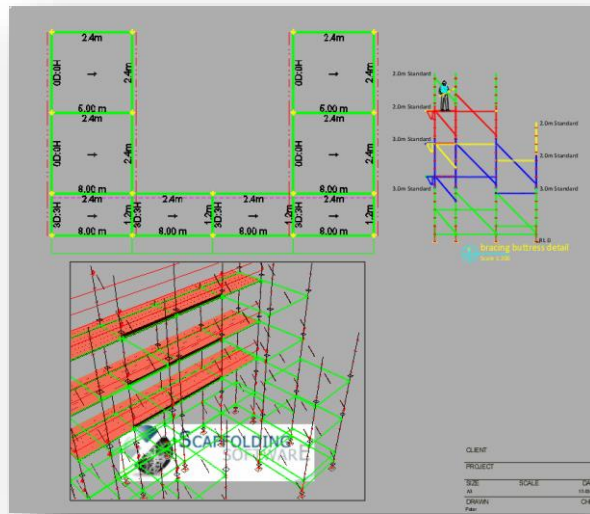
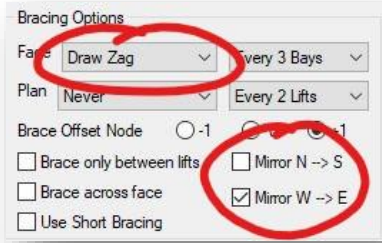
When saving as 3d, certain filenames could be truncated depending upon special characters – filenames are no longer truncated when saving .3d.

Bracing can now be mirrored on a bay e-w or n-s to align bracing on both sides of a bay at the same angle – allowing bracing to be aligned diagonally across adjacent bays, which is useful for buttress bays.





Below left and right Images: Show the bracing for buttress bays.



Left Image: The iScaf Paper - Plot layout now has many additional options to enhance your final presentation – ability to specify grid border layout colours, and three new title block layout options.

Stability improvements that could cause bay elements to be inserted with incorrect parameters if the ATTREQ system variable had been altered from standard.

Resolved some circumstances where insert custom part command would not complete correctly.

Tie bars now supported on some scaffold types with spigotted hop up and post/handrail type hop up handrails.

Resolved a situation where, if inserting a perimeter through typed directions and distances, and you build a perimeter that ends precisely on the first point, and then use the 'close' command to create an additional zero length perimeter segment, that would cause the Build Plan/Build2D command to not complete.

Resolved some situations where standards would not be built to correct height when adding bay north combined with a > 2 node top hand rail height

Corrected an issue with boards/transoms on occasion inserting at slightly incorrect heights equivalent to board thickness – they are now correctly aligned.



Resolved some situations where the Build Course of Build Fine bay Fit option would not correctly limit Build Plan/Build2d bay builds to the specified sizes in setup.

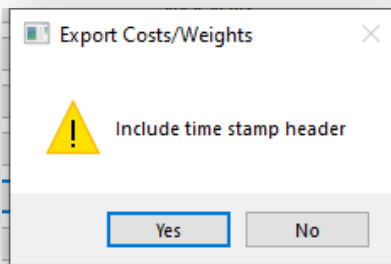
#### New Bay Labelling feature:

*Left Image:* The Bay labels can include label options to show number of decks and side bracket/hop up levels on the bay – either number of decks ('xD', or All Decks: 'AD').

#### Special Tip:

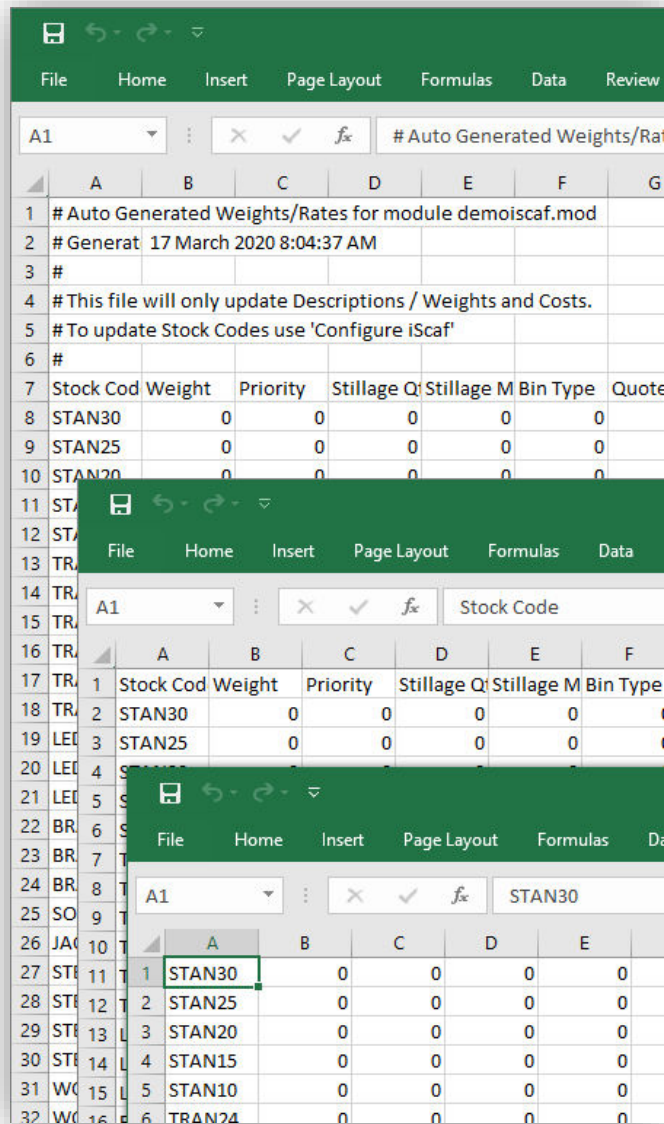
If you wish to recreate the Visual Style for the first example image above for iScaf Build 4548 follow these steps: . Set the Visual Style as "Conceptual" and then apply the following settings: Layer: "Deck" changed to Color 40, "tube\_fit" Blue, "handrail" 8, "lapping" 253. Together With Tools->Options->Display->Colors->3D perspective projection->Background ground origin: Change this option to a lighter color like color 254.

The configuration menu to Import/Export weights and rates for bulk module update – export options now allow removal of some section of the export headers to allow easier manipulation using third party tools, such as excel, and allowing more flexible import options. Three different formats are supported

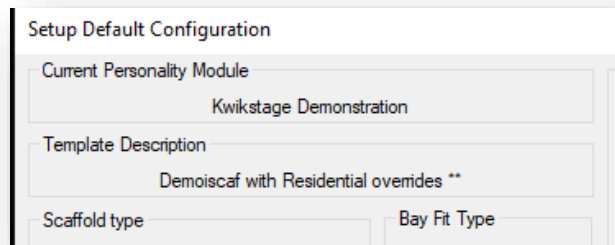


Images:  
Left and  
Right

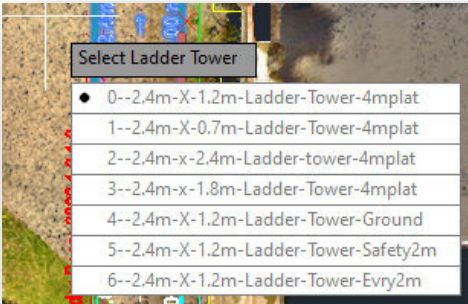
Job Description elements in setup (Used in the iQuote output) are now prevented from propagating from one drawing to subsequent drawings opened in the same iScaf session.



Saved templates allow for a description of the template to be saved and displayed independent of the module name and module description. These are now displayed separately in the setup dialog. This allows drawings based on a template to display both a template description, the module they are using, as well as adding '\*\*' to the description to detail if there are saved module settings applied from the template to the drawing. Templates without '\*\*' will use the settings from the module saved with 'Save Setup' option.

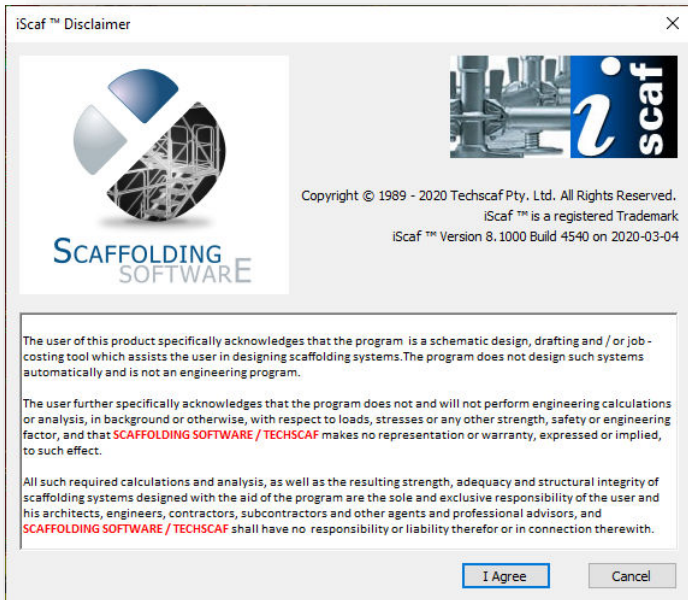
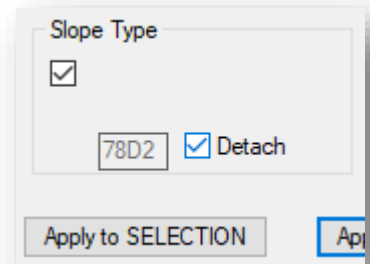


Clearing 'Template for qnew' option in 'Tools Options' allows iScaf to remember last used template without prompting for a template to use for the next drawing.



Ladder names are now displayed with a numeric prefix in the selection menu to avoid instances where ladders with similar names would not be able to be correctly selected and applied.

Sloping Ground on Bays is easier to manage - Edit Wall now displays the status of a bay and whether it is attached to a slope, allows a bay to be detached from slope tags.



There is a new iScaf disclaimer and splash screen on start up.

iScaf does not perform engineering calculations and is not an engineering software program.

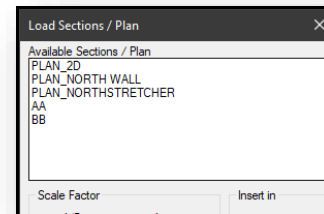
To improve **Build3D** performance, the visual style will be set to 2D Wireframe during **Build3D** command and when automatically re-compiling modules after modification/Save Setup. This allows **Build3D** or module recompile to complete in the fastest time possible, whereas previously it could take a much longer time to complete if an enhanced 3D visual style, such as 'realistic', or 'perspective' was active.

**Build 4470**

August 27, 2019

New Ability to apply sloping ground and non-zero bottom heights to Stretcher Stairs.

New Command Line Command – “IPLANBLOCK”: Currently, iScaf offers to take a snapshot of your entire plan for the insertion into your paper space layout and names it “PLAN\_2D”. “IPLANBLOCK” allows you to create snapshots of subsections of 2D plans before 3D to insert later in the paper plot layout. Type the command and follow the prompts. For example, it can be used to create a plan block of just a stretcher stair, portion of a wall, or any collection of elements of the 2D plan, that can later be inserted into your paper layouts.



DEFAULT\_EXTRA\_PARTS: This is a new option that allows for extra items to be permanently included in drawings as part of the module. For example, Installation Guides, Safety Manuals, Scaffold Tags.

**Streamlined iScaf activation process:** Improved reliability of iScaf activation to accommodate recent changes in Windows 10 behaviour.

Further incremental speed improvements in general interface and build2D/build3D.

Improved functionality in creating professional auto-scaling corner blocks for paper layouts

Improved background overlay options - Tiff and pdf transparency and colour settings applied to all overlays

Improved Quote/Item list output when scaffold elements are nominated for different Delivery Points, Stages and Level assignments.

Additional Address line information available to use in HTML/PDF quote printout

Improved handling of Stages assigned to bay child elements such as planks, handrails. Additional bug fixes for stages.

**Build 4445**

May 12, 2019

**Insert PDF and insert background improvements.**

iScaf automatically hides other pdf files and overlay images when inserting additional background items, and augments the new insert multiple background images into separate background overlay layers feature introduced in Build 4374.

**Express Birdcage and Dance floor Area Fill Improvements**

“Area Fill” improved with more accurate width and length bay selections and plotting.

Deck Setup “Handrail Override” option label changed to “Allow Handrails” to improve readability and improve understanding of feature.

**Tube and Clamp Handrail improvement**

When using the planking command to add handrails without planking, the lapboard count of 0 can now stay as the default entry for subsequent planking commands, streamlining tube and clamp handrail without planking placement.

Improved stability of Linetype and lineweight (handrail/bracing etc symbols) scaling when switching between metric and imperial systems

Hopup width in setup is now maintained when changing hopup heights in side setup dialog along with improvements in the Sync decks heights option algorithm.



Lift Control function deck building enhanced for unusual combination of elements that would inhibit deck building on windows 10 systems.

**Build 4428**

April 30, 2019

**New Length, Area and Volume**

The iScaf quotation and material list now offers length and area of scaffold for Shade Netting or Shrink Wrap as well as area of scaffold for Labour calculations. It is available using feet or metres for length and area.

iScaf Quoting System							
Description : Simple Scaffold Run				Contact : Edward Valen			
Prepared For : Joe Satch				Site Address: 265 Exhibition Street			
Quote Date : Fri Apr 5 2019				: Bestville			
Period : 1 Weeks 0 Days							
Deliveries : NONE							
Stages : NONE				Phone #1 :			
Levels : NONE				FAX #1 :			
Job :				Phone #2 :			
Quotation :				FAX #2 :			
Linear : 14.1 m		(Netting/Shade Cloth)		Linear <sup>1</sup> : 11.6 m		(North Face/Labour)	
Area : 120.0 m <sup>2</sup>		(Netting/Shade Cloth)		Area <sup>1</sup> : 98.4 m <sup>2</sup>		(North Face/Labour)	
Volume : 125.0 m <sup>3</sup>							
Reference : ANDREWEYUNG-DEL\C:\DRAWINGS\sqm01.dwg							

Stock Code	Description	D	S	L	QTY	WEIGHT	AMOUNT
ABSFS	Ajustable Base	0	0	0	12	85.2	1.08

Netting/Shade cloth calculations: This follows the area right around the scaffold including the ends with handrails as well taking into account the setting in Extra setup where the option exists to calculate up to the top lift or to the top handrail for the area.

North Face/Labour calculations: This follows the face area and length of the scaffold only. It will not include the ends of the scaffold and this is typically used for labour calculations. This value will always be the same or less than the Netting/Shade cloth calculations.

Image Above: Example new quote format.

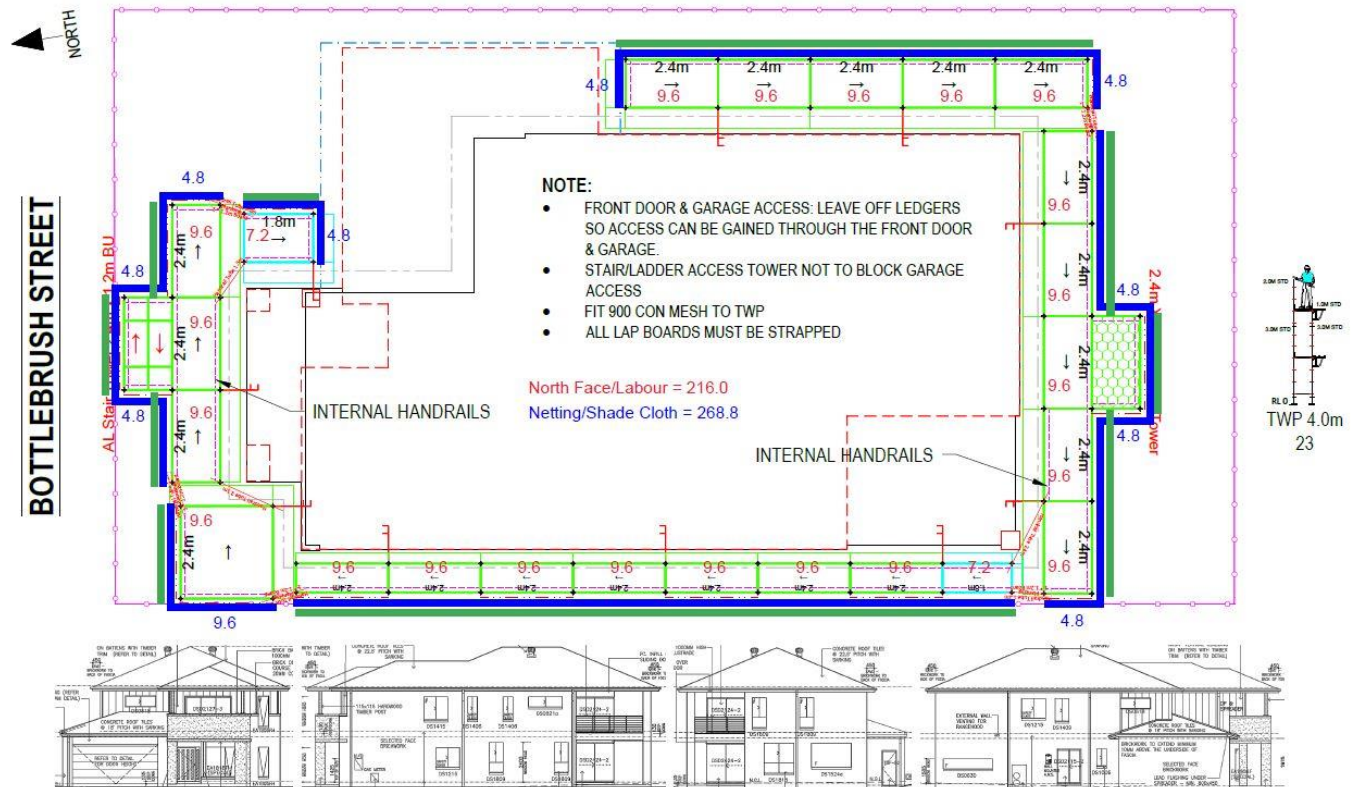


Image Above: Area and Length calculations example.

On the iScaf full material list quote:



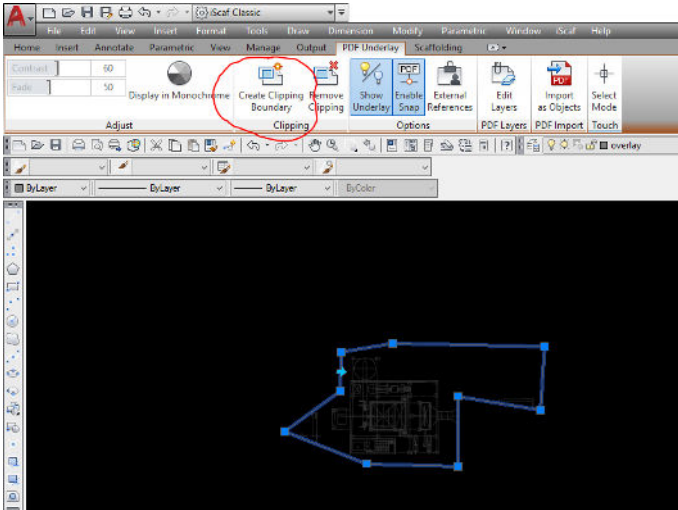


Area = Netting/Shade Cloth                      Area 1= North Face/Labour

In various parts of the world, Shade cloth is also called Scaffold Debris, Netting or Shrink Wrap

*Historical Note: Prior to Nov 29 2016 iScaf calculated face area only. iScaf released Nov 29, 2016 was modified for Netting/Shade cloth calculations. On 8<sup>th</sup> April 2019 the iScaf beta version was released to give both calculation options. This was released to the general client base April 30, 2019.*

**The new import image clip in iScaf version 8**



In iScaf, you can flexibly clip away parts of an external PDF and remove some of the extra text, dimension lines, lines that you don't want.

This can be done easily by clicking on your background image, then clicking on the "Create Clipping Boundary" on the Ribbon that pops up, then follow through by selecting the parts of the image that you would like to keep.

Image Left: Click on "Create Clipping Boundary".

**Build 4420**

Vertical Standards option in Setup for 2 meter and 3 meter Standards now functions correctly by searching for the 4 or 6 node options to build Standards. iScaf will use the 1<sup>st</sup> and 3<sup>rd</sup> standard options if those number of nodes do not exist.

For all client with iScaf ASU with Scaffolding Software, we now provide the ability for the END USER to operate a single license on multiple PC's via the New ACTIVATE AND DEACTIVATE feature. Please contact us for more information about this new feature.

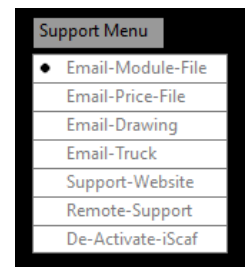
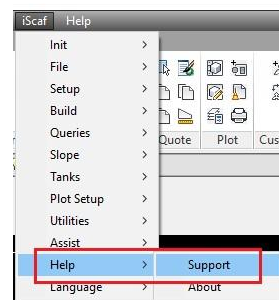
Improved support options as shown on the menu capture on the right.

Quotes to HTML and PDF summary has been improved.

The dialog for the Area Fill Dancefloor/Birdcage feature has improved.

Quote, File, Save and Export slightly enhanced.

Create Solid Building with sloping ground slightly enhanced.



For Decks Setup, the "Default" button will turn the new "Allow Handrail" options ON (no longer called "Handrail Override" for clarity) and it will reset the Deck heights automatically top down.

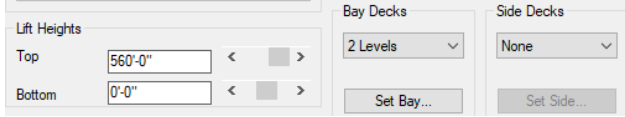
For Decks Setup, the "Reset" button will now revert back to any changes made in the current edit.

The "Check Plan" utility can now handle the situation where some scaffold in the current drawing has already been built to 3D.

### iScaf – Design : 8.1 (January 2019)

#### Build 4396

*iScaf now let's you build scaffold to great heights!*



iScaf now has no limit to the height of scaffold that can be built. It can now accommodate an unlimited top lift height where the scroll bar reaches to 175m or 350ft but you can now type in any value in the field.

The scroll bar for separate decks heights also allows for the same increase in heights via the scroll bar. Our testing has shown that it can build to such heights with very little loss of performance.

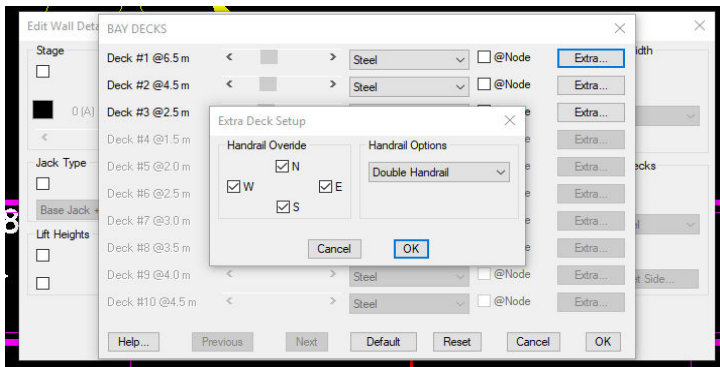
Side Elevations now build quicker and users can also pay attention to the new progress bar at the bottom right corner of the screen which is used when building elevations and 3D for large drawings.

For certain graphics settings, the toolbars and ribbon options can be clearer now.

Bug fixes in relation to Bracing and Linetype scales and other service pack updates are included in this patch.

#### Build 4374

*iScaf 8.1 now gives you fine grain control over handrail placement.*

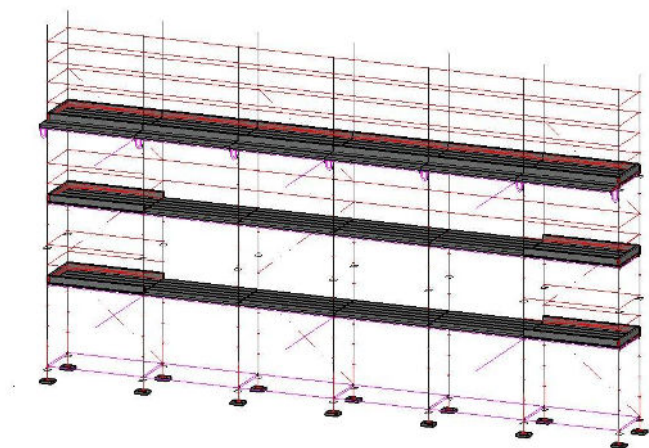


This Greater flexibility is achieved with the handrail override function per deck and per bay.

In the iScaf setup and also the Edit Wall option, you can now use “Bay Decks” |->“Extra” |->“Handrail Override” to remove, or inhibit handrails at any level in any position on any bay. By applying handrails on the 2D bay plan first and then overriding which levels to inhibit handrails, total handrail control can be achieved. The “Edit Wall | Apply to Selection” option also works with this feature for the total control of handrails.

*Above: Fine grain control over handrails in scaffold bays at any level via a smart user interface.*

iScaf now gives you the best of both worlds allowing the global setting, and then as an option, you can override at your specified levels on any of the 4 sides. Please note that Toe Boards still automatically follow the handrail positioning.



## Other features in iScaf 8.1

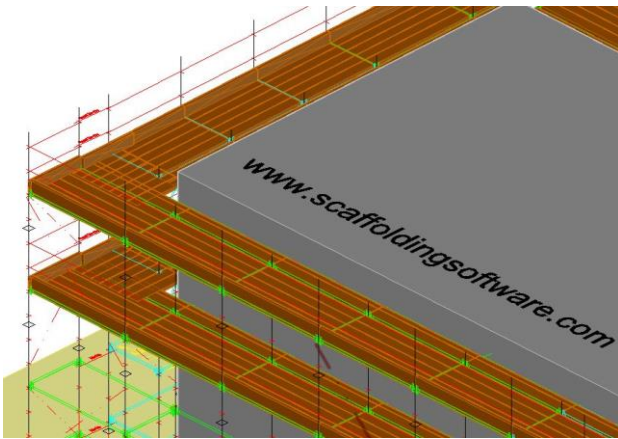
**Improved speed** building 3D with New UCS code using optimised ObjectARX technology

**“Check Plan” option improved** this includes the fix for Build3D error when building second plan when the Check Plan in setup is on

**PDF and Tiff insert background image** can now prompt for an existing layer to insert or to create a new Layer for the background

**Lap Boards improved** to support mesh guards and toe boards when using the “ledger type” handrail option

**Stretcher Stairs improved** to now allow top handrail height and can now go up higher than 2 nodes



**Improved 2.5D drawings** of ledgers and transoms is another step towards full 3D rendering of components without the loss of performance.

Left: Solid 2.5D ledgers

**“Make New Wall” improved** now honours internal handrail setting when creating a new scaffold wall

**Custom Blocks and Parts improved** by adding the stage and level attributes to the function to attach item components to custom blocks so that these blocks can now belong to a Stage or Level

**Plus so much more to help you improve your productivity when working with iScaf as listed below.....**

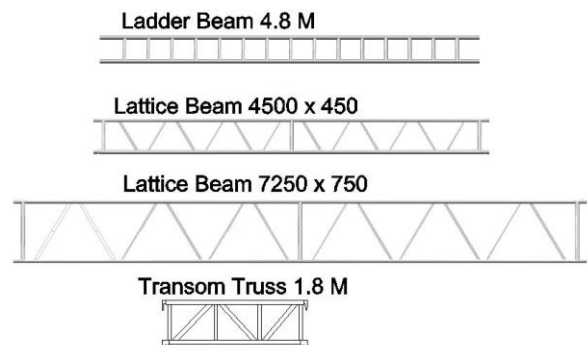
Brace short improved to build bracing for first lift level only

Improved trusses option for ladder beams when building 3D where the offset is now corrected

Lift Control improvements – Dialog box optimisation in size for greater screen size compatibility

Lift Control – Side Bracket/Hopup decks and other functionality improved

Lift control - Added support for NSEW handrails on decks and side brackets



Editing Title Sheet title block bugs fixed when updating existing sheet text

Added prompt for the insert point for Create Custom Part

Area Fill and Area Edit feature is now significantly improved including bay function

Fix for Area Edit not moving symbols when performing the editing

Fan Units parts list improved

Allow Aluminium Stair bay to control its handrails independent of other adjacent bays

Improved support for legacy fonts therefore removing warnings when opening old drawings that contain them

For Stretcher stairs intermediate levels, the number of handrails will follow the STAIRCASE\_EXTRA\_RISER\_HANDRAIL option in the module

Handrails are now individually named \_HANDRAIL\_L\_X / \_HANDRAIL\_W\_X where X is length/Width index

Renamed the HANDRAIL block to \_HR\_0 to identify different length handrails. For flexibility with selection and deletion.

Toeboards are now individually named \_DECK\_TOE\_L\_X / \_DECK\_TOE\_W\_X where X is length/Width index

Fix for Side Brackets widths to check adjacent bays and use current level to get width instead of using default for bay

Linetype scaling is now more reliable regardless of metric or imperial drawings

Force INSUNITS = 0 to force Block/Wblock to unitless drawings to improve creation of module blocks therefore the insertion of blocks is improved as well.

Aluminum Stairs built bottom up now has improved handrail locations

Fixed the situation where incorrect 3D drawing top lift with no deck

Fix for "Set Side" @NODE being reset when Extras clicked

Added new QuickAlly bonus parts

Created a new layer handrail global colour yellow to identify global handrails

Fix for frames to have different side bracket hopup component on face and ends

Increased ladder towers from 20 to 30 items

Fix prompting for file save overwrite on setup save

Remove obsolete menu items from plot setup menu -Insert Drawing Sheet -Insert Plan Drawing-Update Plan Drawing are no longer needed

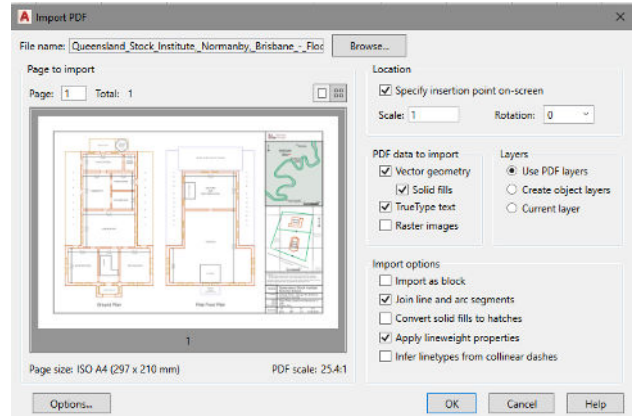
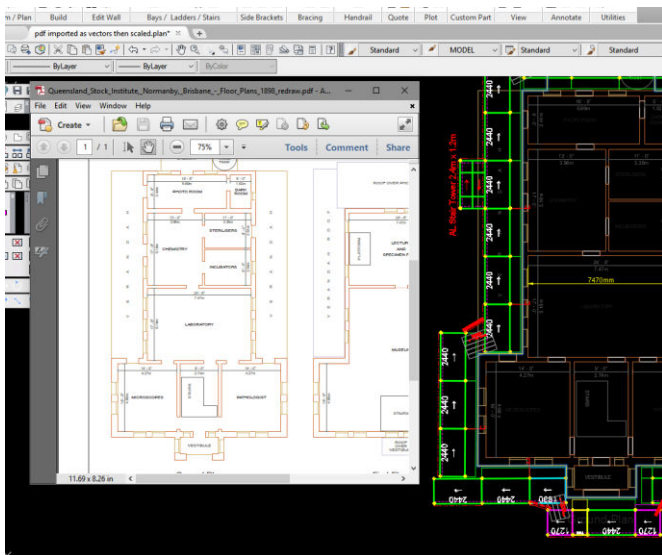
# iScaf – Design : 8.0 (February 2018)

## Build 4282

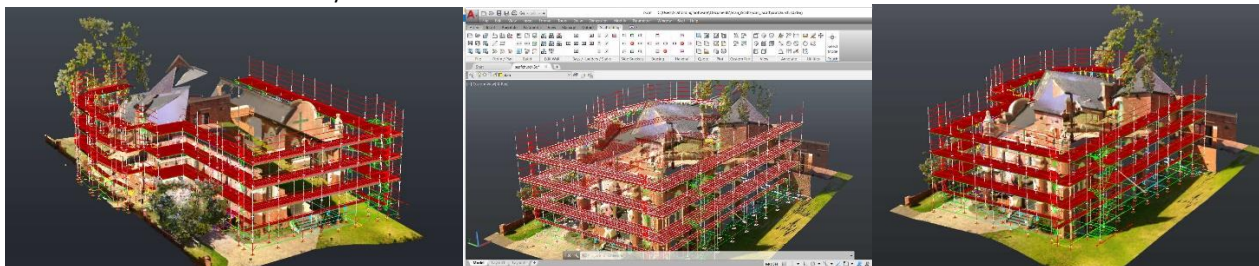
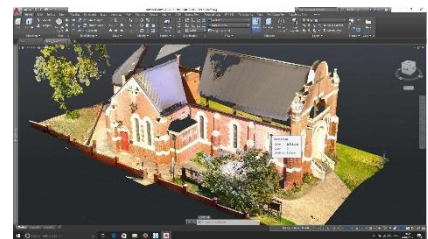
The new release of iScaf 8 is built upon the foundation of the AutoCAD® 2018 engine, whereas iScaf 6.5 was built upon the 2014 engine. This brings with it a very large number of improvements in the capability, performance, and interoperability of the iScaf platform. As always, iScaf remains able to be used by people with NO AutoCAD® experience whatsoever in order to generate Scaffolding drawings and gear lists. But if you do know AutoCAD® well, the full features of the 2018 engine are there for you to exploit to their full potential.

**Improved handling of Infill boards for Layher and AT-PAC scaffolding modules:** Infill boards are now more accurately provisioned with infill boards allotted both within the deck and across ledger spaces between N-S bays and side brackets providing a smoother working surface.

**Importing PDF as Drawing Constructs:** One of the most requested features Scaffolding Software has always fielded from clients has been to allow the import of pdf files into iScaf as drawing constructs that you can snap objects to. iScaf It is now possible to import vector based (Not raster-image based) pdf files as AutoCAD® vectors which can then be scaled and used as the basis for your scaffold drawings. This can massively accelerate the time and accuracy of perimeter drawings with intelligent snap-to and alignment. Accomplishing this process currently requires some manual commands and manipulation, but we envisage creating interfaces in future releases that can be used to streamline the process of conversion scaling further. Another reason to keep your high-value ASU agreements up to date.



**3D PointCloud Support:** 3D PointCloud support is vastly improved allowing you the use of advanced site surveying techniques and equipment to create three dimensional PointCloud objects that can be used to accurately reflect the environment your scaffold is going to interface with. Applications are wide, but include sloping ground, photorealistic rendering of scaffold around objects, identifying site hazards such as powerlines and tree lines that need to be avoided, or rendering of complex internal structures with piping and multiple obstacles that need to be accommodated by the scaffold.





**Enhanced Scrolling performance with background PDF overlays:** iScaf 8's pdf performance and scalability even with complex pdf files as overlays is markedly improved. Unless you have a slow computer, the need to export to .TIF file should now be markedly reduced in order to keep acceptable scrolling performance.

**Much Improved 3D model Scrolling and Rotation:** iScaf 8 is now much better able to leverage the performance advantage of 3D accelerated graphics on more powerful graphics hardware, as well as inbuilt 3D acceleration features available on the later versions of intel and AMD processors: the result is the 3D scrolling and rotation now runs much smoother, with less dropping of details and ghosting of scaffold during manipulation on the screen. You can also enable line smoothing options to help smooth out jagged straight lines on screen.

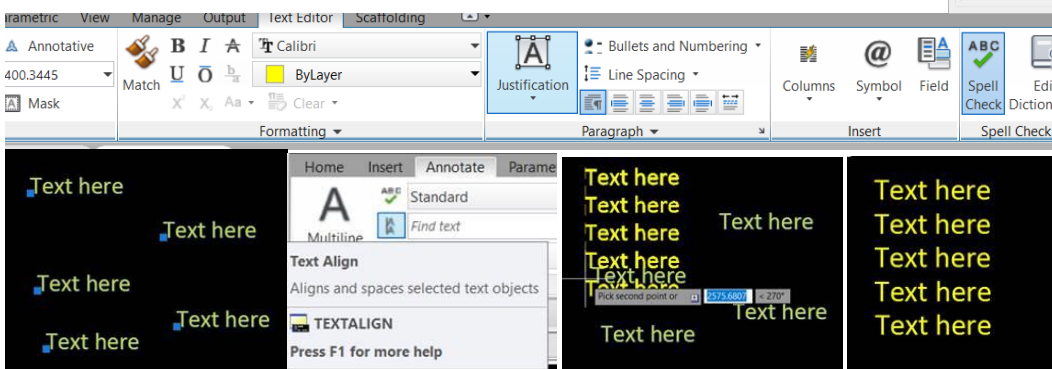
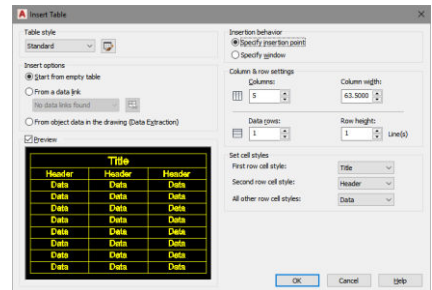
**External File References and Missing Background PDFs Repair:** Many clients have problems with their attached background pdf and image files going missing when they move their drawings around in their computers. There is now robust inbuilt support to find lost images/overlays and reattach them easily and quickly.

**Restoration of Full Ribbon Toolbar Support:** Full ribbon toolbar support has been re-implemented in this release, allowing intelligent command selection and on-screen space saving features replacing the majority of the legacy toolbars. The Ribbon also intelligently displays options for what you are doing at the time – for instance editing text shows the text ribbon automatically.

**New Smart Dimensioning Tool:** The smart dimensioning tool allows for very simple dimensioning line callouts and manipulation to make it easier to document and annotate your plan to allow a clear understanding of your plan details.



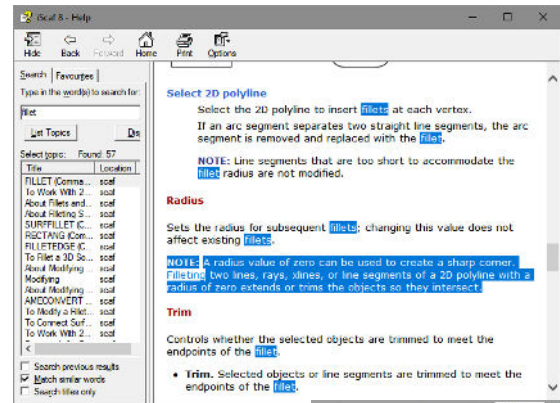
**Enhanced Text Annotation Tools & Automated Table Creation:** Multiline Text and Text align tools allow you to quickly and rapidly create annotations to your plans that look professional and well laid out, as well as improve your ability to clearly communicate your plan's vision. Multiline text now supports centre, left, right and decimal tabs, and new table tools make creating tables much easier and hassle free. Quick text alignment allow uniform spacing and alignment of multiple text items to make your plans look their best.



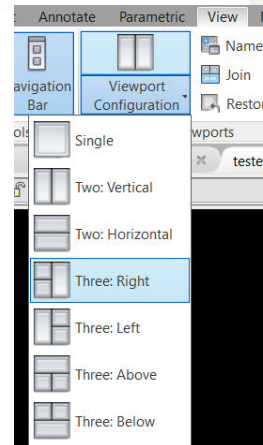
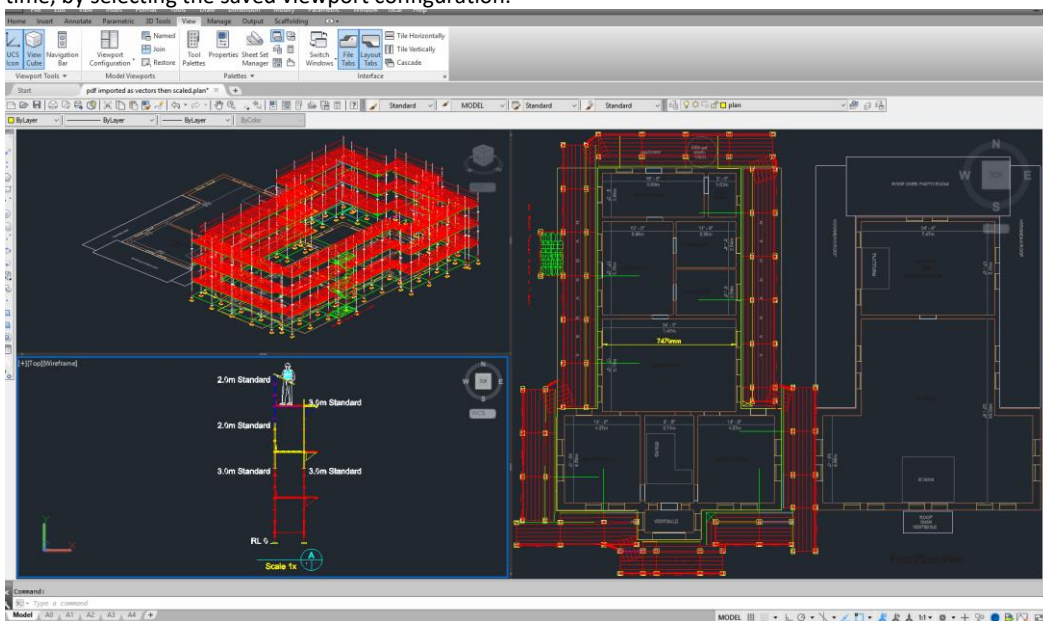


**TEXTEDITMODE:** Changing the new TEXTEDITMODE system variable allows you to edit multiple text blocks without having to re-enter the TEXTEDIT command over and over – just click on the next block of text and begin editing.

**AutoCAD® Full Context-Sensitive Help:** The full AutoCAD® online help document is distributed with the iScaf 8 product, allowing you to get help documentation of AutoCAD® commands and dialog options to assist you with understanding the more advanced AutoCAD® functions available to you in iScaf 8. The example to the right shows documentation of the AutoCAD® FILLET command which allows you to quickly join two line segments in a variety of useful ways, such as when you don't quite get the scaffold perimeter line to close properly.



**Model Space Viewports:** Easily show multiple angles/zoom/views of same drawing in model space with various different display segmenting options. You can drag the edges of viewports to change their margins, and you can name a viewport configuration so you can return to it quickly, at any time, by selecting the saved viewport configuration.



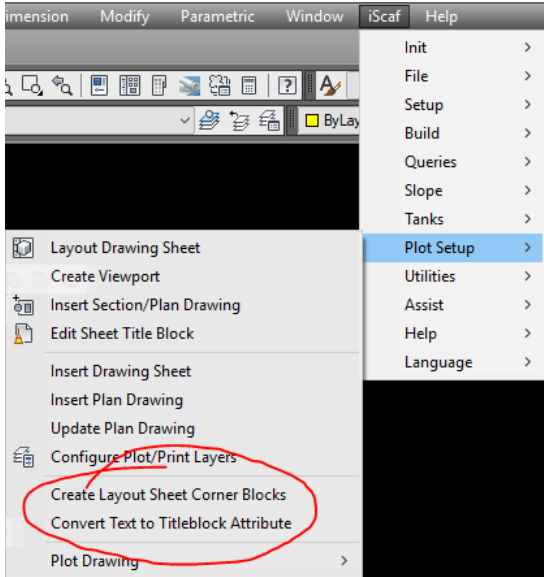
**Named Views Improved Access:** It is now a simple matter to create named views using the options available on the View Ribbon and give them names, so you can create views of your drawings with layers turned on and off, and quickly return to them by selecting them from a list. For instance you can create a perspective view with the boards layer turned off so you can see more clearly through the scaffold and be able to toggle back and forth between various saved named views with ease.

**Enhanced PDF Output Options:** PDF exporting options have been greatly enhanced, creating far more robust and useful PDF documents for distribution and archival. Text you use to annotate your drawings within exported PDF files is now searchable, and all your TrueType fonts are able to be output to PDF formats. Even vector based text is searchable from within the pdf and available to in-house search engines, making finding documents easier.

You can create multiple named views in your paper layouts and choose to create a single PDF file with multiple pages that corresponds with your views. You can even create thumbnail previews within the PDF file.

**Enhanced Activation and Deactivation Protocols:** iScaf 8 supports enhanced activation and deactivation protocols - making licenses easier to activate and introduce methods to allow users to deactivate and move licenses – typically without having to involve Scaffolding Software staff to do so. This initiative is part of a plan to make iScaf licensing more flexible and dynamic.

### iScaf - Design : 6.5 (July, 2017) Build 4256 (last release prior to Version 8)



Now iScaf modules can now be modified to offer a choice of trusses for the same bay length combinations. i.e.) Users have a choice of trusses, bridging ledgers, or ladder/lattice beams for the same span distance.

Ladder towers now have the option of starting from the actual ground level instead of the first connection node

Fix for doubling up of ladders on bottom of ladder towers

Added Fan Units & Fan Share to Lengths & Widths in the configuration area (internally Removed STOCK.fan data structure and added them to STOCK.face & STOCK.end)

Further improvements to the way the user can customize their own drawing sheet title blocks

Left: as shown on the menu option

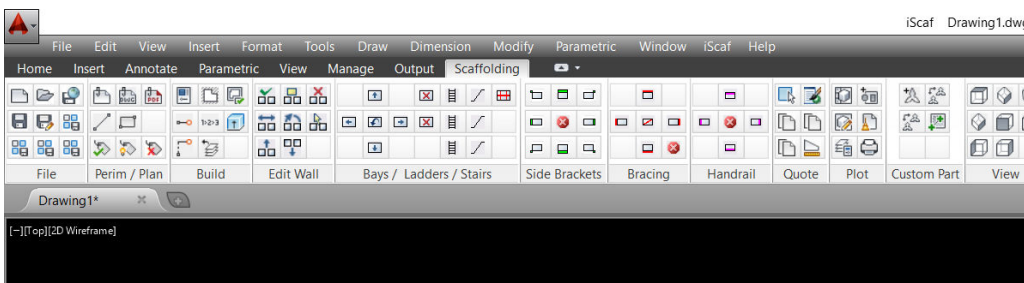
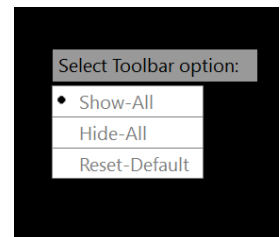
- The Title block date can be edited as an attribute
- The Title block Reference fields can be shown and updated

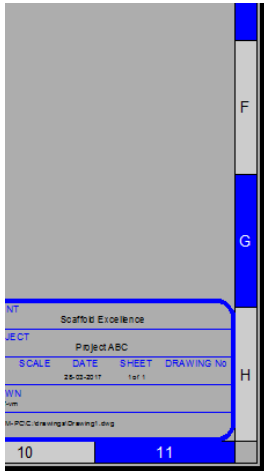
### iScaf - Design : 6.5 (May, 2017) Build 4250

#### Toolbar Management/Recovery and New Optional Ribbon Toolbar.

The iToolbar command allows you to rapidly control your iScaf toolbars – quickly hide them all to get a better view, quickly show them all, or quickly reset them to the default setup.

For those of you interested in using the toolbars in a ribbon scenario, iScaf now has its own entirely new ribbon which can be an especial boon to new users to assist with learning the iScaf system.





### Title Block Borders

The title block border option now allows you to easily create a Grid Layout presented with Letter and Numeral Grid References with customisable colour configurations.

### Professional Drawings

We have added new tools which make it easy to create a template with your company logo and custom text

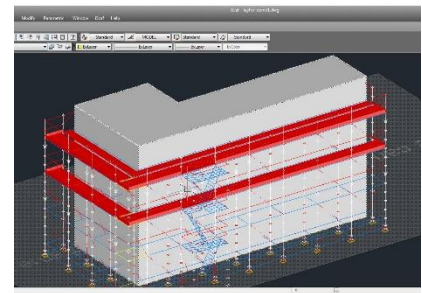
Plot setup -> Create layout sheet corner blocks

If you already have a CAD template, no matter how complex, you can convert this to the iScaf format using

Plot setup -> Convert text to title block attribute

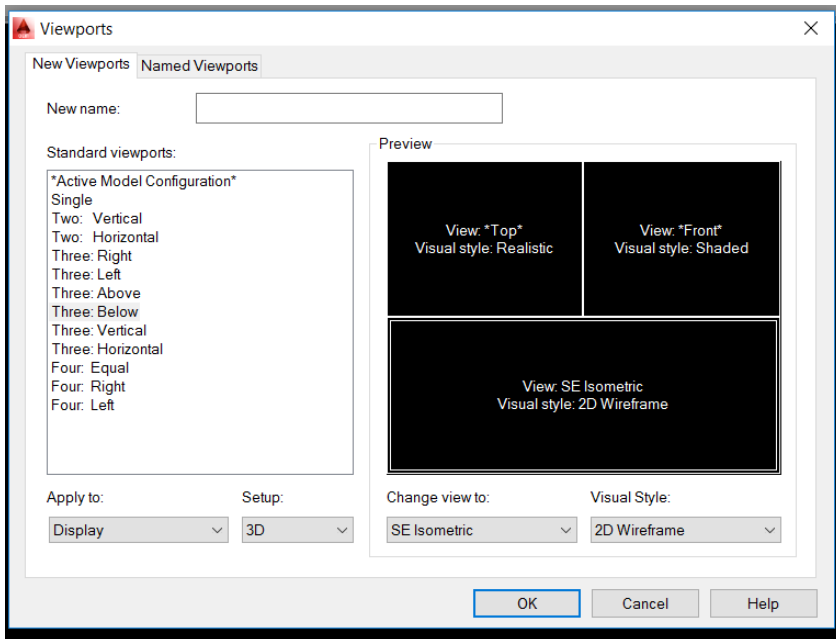
### Solid Building Improvements

The iScaf "Create Solid building" feature has improved with height and wall selection options to improve the 3D presentation of your drawings.



### Viewport Quick Setup for Print

Exciting new and improved viewport options allowing rapid setup of multiple Viewport configurations allowing quick deployment of several popular viewport configurations in just a few short clicks/commands.

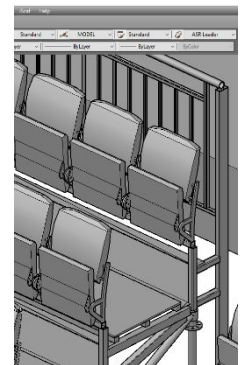


### Improved Area and Linear Metres calculations

Area and Linear calculations now follows handrails and perimeter and all access bays all around the scaffolding. This will help make Shade cloth and Mesh calculations far more accurate.

### Temporary Seating Structure Improvements

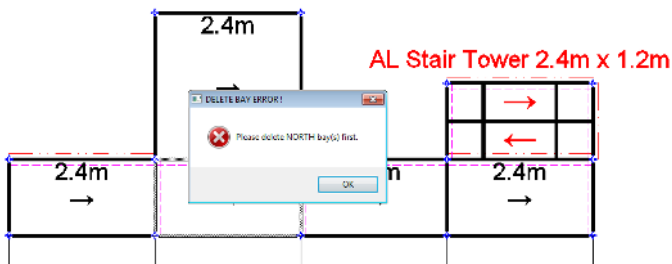
iScaf now has support for seating structures. You can now drag and drop seating components in to your drawing to build top quality plan and 3D grandstands with a full material list or quotation.



### Improved MultiBay Structure Management

When an operator deletes or replaces a bay in a situation where there are connected North and or South Parts, iScaf now gives warning for north and south parts connected; and will now correctly disallow this operation.

Delete bay and delete bay part can now be used for access bays north and south without any difficulty.



If deleting or replacing a bay with a North Bay or Stair/Ladder object, the whole column will no longer be removed. The warning message will correctly ask the user to remove the part first.

Delete Part can be used to create a gap in the middle of a run effectively creating 2 scaffold walls without an issue. This all adds to the flexibility of the system.

## iScaf - Design : 6.5 (October, 2016)

### Build 3678

Quotation report flexibility and customization of PDF file. Format your own material list and exclude fields that you don't need.

Further improvements to the positioning of text for joining bays and lap boards.

Full PDF and CSV export for quotation creation. This includes the custom save folder selection.

Editing the width of an entire run does not change the width of the ladder or stair. This is an improved behaviour.

We now default the size of the bay when adding bays manually which helps with quicker editing.

Greater flexibility for internal handrails for larger commercial jobs. *For Example: NO Toe boards and NO mid rails for the inside.*

More Commercial scaffold advanced techniques and enhancements. Allocation to scaffold levels. Contact us for the new video tutorials.

Dotted lines for braces and handrails in plan are now being printed. We call it "Auto LTSCALE" feature.

Further improvements to stretcher stairs and flexible dimensions.

**Scaffolding Software**  
 A.B.N. 111 222 333 444  
 2200 / 200 Scarborough  
 Melbourne Victoria 30110  
 Phone +61 (0) 2360 9962 Fax +61(0) 2360 9963  
 Accounts Department  
 88 Billing Street  
 Melbourne 3000

**Tax Invoice**  
 Monogroup Inc.  
 11 Colson's Street  
 Dandenong  
 VIC

Invoice # 1680008  
 Invoice Date: 12/08/16  
 Quote #  
 Project: MAGELEY  
 Mackleay, Lot 270, 11 Dandenong  
 Site Address: Lot 279 Mackleay

Purchase Order No:

Details	Total (ex-GST)
<b>External Scaffolding</b>	
Per Week Handrail from 15/01/16 - 31/01/16 (17 Days)	\$1092.00
Per Week Handrail from 01/02/16 - 28/02/16 (28 Days)	\$1414.25
Per Week Handrail from 01/03/16 - 28/03/16 (28 Days)	\$1414.25
Per Week Handrail from 29/03/16 - 26/04/16 (7 Days)	\$225.00
Per Week Handrail from 27/04/16 - 24/05/16 (28 Days)	\$1020.00
Per Week Handrail from 25/05/16 - 22/06/16 (28 Days)	\$1020.00
Per Week Handrail from 23/06/16 - 20/07/16 (28 Days)	\$1020.00
Per Week Handrail from 21/07/16 - 18/08/16 (28 Days)	\$1020.00
Per Week Handrail from 19/08/16 - 16/09/16 (28 Days)	\$1020.00
Per Week Handrail from 17/09/16 - 14/10/16 (28 Days)	\$1020.00
Per Week Handrail from 15/10/16 - 12/11/16 (28 Days)	\$1020.00
Per Week Handrail from 13/11/16 - 10/12/16 (28 Days)	\$1020.00
Per Week Handrail from 11/12/16 - 08/01/17 (28 Days)	\$1020.00
Per Week Handrail from 09/01/17 - 06/02/17 (28 Days)	\$1020.00
Per Week Handrail from 07/02/17 - 04/03/17 (28 Days)	\$1020.00
Per Week Handrail from 05/03/17 - 02/04/17 (28 Days)	\$1020.00
Per Week Handrail from 03/04/17 - 01/05/17 (28 Days)	\$1020.00
Per Week Handrail from 02/05/17 - 29/05/17 (28 Days)	\$1020.00
Per Week Handrail from 30/05/17 - 26/06/17 (28 Days)	\$1020.00
Per Week Handrail from 27/06/17 - 24/07/17 (28 Days)	\$1020.00
Per Week Handrail from 25/07/17 - 22/08/17 (28 Days)	\$1020.00
Per Week Handrail from 23/08/17 - 20/09/17 (28 Days)	\$1020.00
Per Week Handrail from 21/09/17 - 18/10/17 (28 Days)	\$1020.00
Per Week Handrail from 19/10/17 - 16/11/17 (28 Days)	\$1020.00
Per Week Handrail from 17/11/17 - 14/12/17 (28 Days)	\$1020.00
Per Week Handrail from 15/12/17 - 12/01/18 (28 Days)	\$1020.00
Per Week Handrail from 13/01/18 - 10/02/18 (28 Days)	\$1020.00
Per Week Handrail from 11/02/18 - 09/03/18 (28 Days)	\$1020.00
Per Week Handrail from 10/03/18 - 07/04/18 (28 Days)	\$1020.00
Per Week Handrail from 08/04/18 - 06/05/18 (28 Days)	\$1020.00
Per Week Handrail from 07/05/18 - 04/06/18 (28 Days)	\$1020.00
Per Week Handrail from 05/06/18 - 03/07/18 (28 Days)	\$1020.00
Per Week Handrail from 04/07/18 - 01/08/18 (28 Days)	\$1020.00
Per Week Handrail from 02/08/18 - 30/08/18 (28 Days)	\$1020.00
Per Week Handrail from 31/08/18 - 28/09/18 (28 Days)	\$1020.00
Per Week Handrail from 29/09/18 - 26/10/18 (28 Days)	\$1020.00
Per Week Handrail from 27/10/18 - 24/11/18 (28 Days)	\$1020.00
Per Week Handrail from 25/11/18 - 23/12/18 (28 Days)	\$1020.00
Per Week Handrail from 24/12/18 - 21/01/19 (28 Days)	\$1020.00
Per Week Handrail from 22/01/19 - 19/02/19 (28 Days)	\$1020.00
Per Week Handrail from 20/02/19 - 17/03/19 (28 Days)	\$1020.00
Per Week Handrail from 18/03/19 - 15/04/19 (28 Days)	\$1020.00
Per Week Handrail from 16/04/19 - 13/05/19 (28 Days)	\$1020.00
Per Week Handrail from 14/05/19 - 11/06/19 (28 Days)	\$1020.00
Per Week Handrail from 12/06/19 - 09/07/19 (28 Days)	\$1020.00
Per Week Handrail from 10/07/19 - 07/08/19 (28 Days)	\$1020.00
Per Week Handrail from 08/08/19 - 05/09/19 (28 Days)	\$1020.00
Per Week Handrail from 06/09/19 - 04/10/19 (28 Days)	\$1020.00
Per Week Handrail from 05/10/19 - 02/11/19 (28 Days)	\$1020.00
Per Week Handrail from 03/11/19 - 01/12/19 (28 Days)	\$1020.00
Per Week Handrail from 02/12/19 - 30/11/19 (28 Days)	\$1020.00
Per Week Handrail from 31/11/19 - 29/12/19 (28 Days)	\$1020.00
Per Week Handrail from 30/12/19 - 27/01/20 (28 Days)	\$1020.00
Per Week Handrail from 28/01/20 - 26/02/20 (28 Days)	\$1020.00
Per Week Handrail from 27/02/20 - 25/03/20 (28 Days)	\$1020.00
Per Week Handrail from 26/03/20 - 23/04/20 (28 Days)	\$1020.00
Per Week Handrail from 24/04/20 - 21/05/20 (28 Days)	\$1020.00
Per Week Handrail from 22/05/20 - 19/06/20 (28 Days)	\$1020.00
Per Week Handrail from 20/06/20 - 17/07/20 (28 Days)	\$1020.00
Per Week Handrail from 18/07/20 - 15/08/20 (28 Days)	\$1020.00
Per Week Handrail from 16/08/20 - 13/09/20 (28 Days)	\$1020.00
Per Week Handrail from 14/09/20 - 11/10/20 (28 Days)	\$1020.00
Per Week Handrail from 12/10/20 - 09/11/20 (28 Days)	\$1020.00
Per Week Handrail from 10/11/20 - 07/12/20 (28 Days)	\$1020.00
Per Week Handrail from 08/12/20 - 05/01/21 (28 Days)	\$1020.00
Per Week Handrail from 06/01/21 - 03/02/21 (28 Days)	\$1020.00
Per Week Handrail from 04/02/21 - 01/03/21 (28 Days)	\$1020.00
Per Week Handrail from 02/03/21 - 29/03/21 (28 Days)	\$1020.00
Per Week Handrail from 30/03/21 - 27/04/21 (28 Days)	\$1020.00
Per Week Handrail from 28/04/21 - 26/05/21 (28 Days)	\$1020.00
Per Week Handrail from 27/05/21 - 24/06/21 (28 Days)	\$1020.00
Per Week Handrail from 25/06/21 - 23/07/21 (28 Days)	\$1020.00
Per Week Handrail from 24/07/21 - 21/08/21 (28 Days)	\$1020.00
Per Week Handrail from 22/08/21 - 19/09/21 (28 Days)	\$1020.00
Per Week Handrail from 20/09/21 - 17/10/21 (28 Days)	\$1020.00
Per Week Handrail from 18/10/21 - 15/11/21 (28 Days)	\$1020.00
Per Week Handrail from 16/11/21 - 13/12/21 (28 Days)	\$1020.00
Per Week Handrail from 14/12/21 - 11/01/22 (28 Days)	\$1020.00
Per Week Handrail from 12/01/22 - 09/02/22 (28 Days)	\$1020.00
Per Week Handrail from 10/02/22 - 07/03/22 (28 Days)	\$1020.00
Per Week Handrail from 08/03/22 - 05/04/22 (28 Days)	\$1020.00
Per Week Handrail from 06/04/22 - 03/05/22 (28 Days)	\$1020.00
Per Week Handrail from 04/05/22 - 01/06/22 (28 Days)	\$1020.00
Per Week Handrail from 02/06/22 - 30/06/22 (28 Days)	\$1020.00
Per Week Handrail from 31/06/22 - 29/07/22 (28 Days)	\$1020.00
Per Week Handrail from 30/07/22 - 27/08/22 (28 Days)	\$1020.00
Per Week Handrail from 28/08/22 - 25/09/22 (28 Days)	\$1020.00
Per Week Handrail from 26/09/22 - 23/10/22 (28 Days)	\$1020.00
Per Week Handrail from 24/10/22 - 21/11/22 (28 Days)	\$1020.00
Per Week Handrail from 22/11/22 - 19/12/22 (28 Days)	\$1020.00
Per Week Handrail from 20/12/22 - 17/01/23 (28 Days)	\$1020.00
Per Week Handrail from 18/01/23 - 15/02/23 (28 Days)	\$1020.00
Per Week Handrail from 16/02/23 - 13/03/23 (28 Days)	\$1020.00
Per Week Handrail from 14/03/23 - 11/04/23 (28 Days)	\$1020.00
Per Week Handrail from 12/04/23 - 09/05/23 (28 Days)	\$1020.00
Per Week Handrail from 10/05/23 - 07/06/23 (28 Days)	\$1020.00
Per Week Handrail from 08/06/23 - 05/07/23 (28 Days)	\$1020.00
Per Week Handrail from 06/07/23 - 03/08/23 (28 Days)	\$1020.00
Per Week Handrail from 04/08/23 - 01/09/23 (28 Days)	\$1020.00
Per Week Handrail from 02/09/23 - 30/09/23 (28 Days)	\$1020.00
Per Week Handrail from 31/09/23 - 29/10/23 (28 Days)	\$1020.00
Per Week Handrail from 30/10/23 - 27/11/23 (28 Days)	\$1020.00
Per Week Handrail from 28/11/23 - 26/12/23 (28 Days)	\$1020.00
Per Week Handrail from 27/12/23 - 24/01/24 (28 Days)	\$1020.00
Per Week Handrail from 25/01/24 - 22/02/24 (28 Days)	\$1020.00
Per Week Handrail from 23/02/24 - 20/03/24 (28 Days)	\$1020.00
Per Week Handrail from 21/03/24 - 18/04/24 (28 Days)	\$1020.00
Per Week Handrail from 19/04/24 - 16/05/24 (28 Days)	\$1020.00
Per Week Handrail from 17/05/24 - 14/06/24 (28 Days)	\$1020.00
Per Week Handrail from 15/06/24 - 12/07/24 (28 Days)	\$1020.00
Per Week Handrail from 13/07/24 - 10/08/24 (28 Days)	\$1020.00
Per Week Handrail from 11/08/24 - 08/09/24 (28 Days)	\$1020.00
Per Week Handrail from 09/09/24 - 06/10/24 (28 Days)	\$1020.00
Per Week Handrail from 07/10/24 - 04/11/24 (28 Days)	\$1020.00
Per Week Handrail from 05/11/24 - 02/12/24 (28 Days)	\$1020.00
Per Week Handrail from 03/12/24 - 01/01/25 (28 Days)	\$1020.00
Per Week Handrail from 02/01/25 - 30/01/25 (28 Days)	\$1020.00
Per Week Handrail from 31/01/25 - 29/02/25 (28 Days)	\$1020.00
Per Week Handrail from 30/02/25 - 27/03/25 (28 Days)	\$1020.00
Per Week Handrail from 28/03/25 - 26/04/25 (28 Days)	\$1020.00
Per Week Handrail from 27/04/25 - 24/05/25 (28 Days)	\$1020.00
Per Week Handrail from 25/05/25 - 22/06/25 (28 Days)	\$1020.00
Per Week Handrail from 23/06/25 - 20/07/25 (28 Days)	\$1020.00
Per Week Handrail from 21/07/25 - 18/08/25 (28 Days)	\$1020.00
Per Week Handrail from 19/08/25 - 16/09/25 (28 Days)	\$1020.00
Per Week Handrail from 17/09/25 - 14/10/25 (28 Days)	\$1020.00
Per Week Handrail from 15/10/25 - 12/11/25 (28 Days)	\$1020.00
Per Week Handrail from 13/11/25 - 10/12/25 (28 Days)	\$1020.00
Per Week Handrail from 11/12/25 - 08/01/26 (28 Days)	\$1020.00
Per Week Handrail from 09/01/26 - 06/02/26 (28 Days)	\$1020.00
Per Week Handrail from 07/02/26 - 04/03/26 (28 Days)	\$1020.00
Per Week Handrail from 05/03/26 - 02/04/26 (28 Days)	\$1020.00
Per Week Handrail from 03/04/26 - 01/05/26 (28 Days)	\$1020.00
Per Week Handrail from 02/05/26 - 30/05/26 (28 Days)	\$1020.00
Per Week Handrail from 31/05/26 - 29/06/26 (28 Days)	\$1020.00
Per Week Handrail from 30/06/26 - 27/07/26 (28 Days)	\$1020.00
Per Week Handrail from 28/07/26 - 25/08/26 (28 Days)	\$1020.00
Per Week Handrail from 26/08/26 - 23/09/26 (28 Days)	\$1020.00
Per Week Handrail from 24/09/26 - 21/10/26 (28 Days)	\$1020.00
Per Week Handrail from 22/10/26 - 19/11/26 (28 Days)	\$1020.00
Per Week Handrail from 20/11/26 - 17/12/26 (28 Days)	\$1020.00
Per Week Handrail from 18/12/26 - 15/01/27 (28 Days)	\$1020.00
Per Week Handrail from 16/01/27 - 13/02/27 (28 Days)	\$1020.00
Per Week Handrail from 14/02/27 - 11/03/27 (28 Days)	\$1020.00
Per Week Handrail from 12/03/27 - 09/04/27 (28 Days)	\$1020.00
Per Week Handrail from 10/04/27 - 07/05/27 (28 Days)	\$1020.00
Per Week Handrail from 08/05/27 - 05/06/27 (28 Days)	\$1020.00
Per Week Handrail from 06/06/27 - 03/07/27 (28 Days)	\$1020.00
Per Week Handrail from 04/07/27 - 01/08/27 (28 Days)	\$1020.00
Per Week Handrail from 02/08/27 - 30/08/27 (28 Days)	\$1020.00
Per Week Handrail from 31/08/27 - 29/09/27 (28 Days)	\$1020.00
Per Week Handrail from 30/09/27 - 27/10/27 (28 Days)	\$1020.00
Per Week Handrail from 28/10/27 - 26/11/27 (28 Days)	\$1020.00
Per Week Handrail from 27/11/27 - 24/12/27 (28 Days)	\$1020.00
Per Week Handrail from 25/12/27 - 22/01/28 (28 Days)	\$1020.00
Per Week Handrail from 23/01/28 - 20/02/28 (28 Days)	\$1020.00
Per Week Handrail from 21/02/28 - 18/03/28 (28 Days)	\$1020.00
Per Week Handrail from 19/03/28 - 16/04/28 (28 Days)	\$1020.00
Per Week Handrail from 17/04/28 - 14/05/28 (28 Days)	\$1020.00
Per Week Handrail from 15/05/28 - 12/06/28 (28 Days)	\$1020.00
Per Week Handrail from 13/06/28 - 10/07/28 (28 Days)	\$1020.00
Per Week Handrail from 11/07/28 - 08/08/28 (28 Days)	\$1020.00
Per Week Handrail from 09/08/28 - 06/09/28 (28 Days)	\$1020.00
Per Week Handrail from 07/09/28 - 04/10/28 (28 Days)	\$1020.00
Per Week Handrail from 05/10/28 - 02/11/28 (28 Days)	\$1020.00
Per Week Handrail from 03/11/28 - 01/12/28 (28 Days)	\$1020.00
Per Week Handrail from 02/12/28 - 30/11/28 (28 Days)	\$1020.00
Per Week Handrail from 31/11/28 - 29/12/28 (28 Days)	\$1020.00
Per Week Handrail from 30/12/28 - 27/01/29 (28 Days)	\$1020.00
Per Week Handrail from 28/01/29 - 26/02/29 (28 Days)	\$1020.00
Per Week Handrail from 27/02/29 - 24/03/29 (28 Days)	\$1020.00
Per Week Handrail from 25/03/29 - 22/04/29 (28 Days)	\$1020.00
Per Week Handrail from 23/04/29 - 20/05/29 (28 Days)	\$1020.00
Per Week Handrail from 21/05/29 - 18/06/29 (28 Days)	\$1020.00
Per Week Handrail from 19/06/29 - 16/07/29 (28 Days)	\$1020.00
Per Week Handrail from 17/07/29 - 14/08/29 (28 Days)	\$1020.00
Per Week Handrail from 15/08/29 - 12/09/29 (28 Days)	\$1020.00
Per Week Handrail from 13/09/29 - 10/10/29 (28 Days)	\$1020.00
Per Week Handrail from 11/10/29 - 08/11/29 (28 Days)	\$1020.00
Per Week Handrail from 09/11/29 - 06/12/29 (28 Days)	\$1020.00
Per Week Handrail from 07/12/29 - 04/01/30 (28 Days)	\$1020.00
Per Week Handrail from 05/01/30 - 02/02/30 (28 Days)	\$1020.00
Per Week Handrail from 03/02/30 - 01/03/30 (28 Days)	\$1020.00
Per Week Handrail from 02/03/30 - 29/03/30 (28 Days)	\$1020.00
Per Week Handrail from 30/03/30 - 27/04/30 (28 Days)	\$1020.00
Per Week Handrail from 28/04/30 - 26/05/30 (28 Days)	\$1020.00
Per Week Handrail from 27/05/30 - 24/06/30 (28 Days)	\$1020.00
Per Week Handrail from 25/06/30 - 22/07/30 (28 Days)	\$1020.00
Per Week Handrail from 23/07/30 - 20/08/30 (28 Days)	\$1020.00
Per Week Handrail from 21/08/30 - 18/09/30 (28 Days)	\$1020.00
Per Week Handrail from 19/09/30 - 16/10/30 (28 Days)	\$1020.00
Per Week Handrail from 17/10/30 - 14/11/30 (28 Days)	\$1020.00
Per Week Handrail from 15/11/30 - 12/12/30 (28 Days)	\$1020.00
Per Week Handrail from 13/12/30 - 10/01/31 (28 Days)	\$1020.00
Per Week Handrail from 11/01/31 - 08/02/31 (28 Days)	\$1020.00
Per Week Handrail from 09/02/31 - 06/03/31 (28 Days)	\$1020.00
Per Week Handrail from 07/03/31 - 04/04/31 (28 Days)	\$1020.00
Per Week Handrail from 05/04/31 - 02/05/31 (28 Days)	\$1020.00
Per Week Handrail from 03/05/31 - 01/06/31 (28 Days)	\$1020.00
Per Week Handrail from 02/06/31 - 30/06/31 (28 Days)	\$1020.00
Per Week Handrail from 31/06/31 - 29/07/31 (28 Days)	\$1020.00
Per Week Handrail from 30/07/31 - 27/08/31 (28 Days)	\$1020.00
Per Week Handrail from 28/08/31 - 25/09/31 (28 Days)	\$1020.00
Per Week Handrail from 26/09/31 - 23/10/31 (28 Days)	\$1020.00
Per Week Handrail from 24/10/31 - 21/11/31 (28 Days)	\$1020.00
Per Week Handrail from 22/11/31 - 19/12/31 (28 Days)	\$1020.00
Per Week Handrail from 20/12/31 - 17/01/32 (28 Days)	\$1020.00
Per Week Handrail from 18/01/32 - 15/02/32 (28 Days)	\$1020.00
Per Week Handrail from 16/02/32 - 13/03/32 (28 Days)	\$1

## iScaf - Design : 6.5 (May, 2016)

Existing users will enjoy these great productivity improvements.

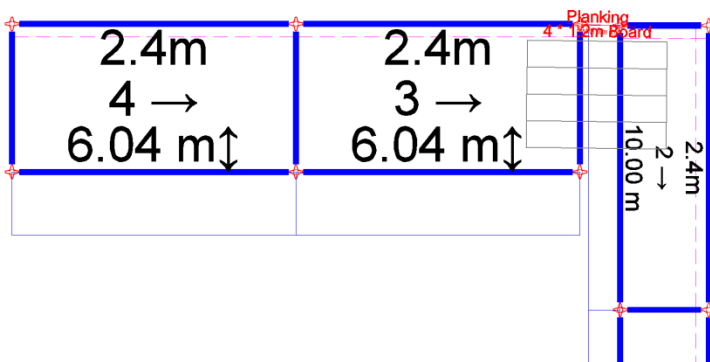
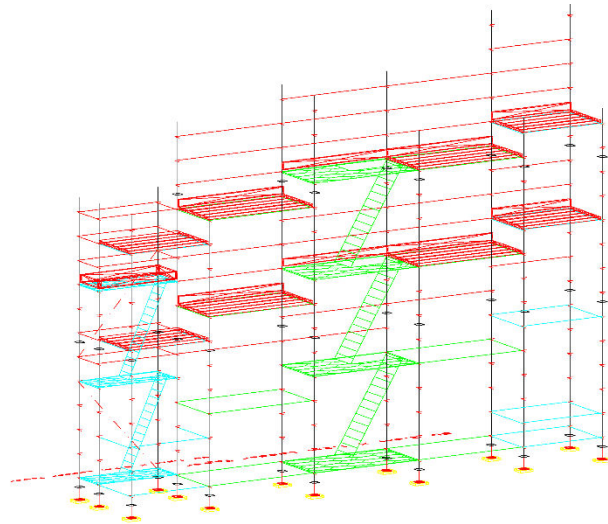
Build 3188 Below

**New updates to the ladder towers and trap door styles:** You can now build ladder towers bottom up (BU) or top down (TD) so bays and ladders can now start and stop exactly where you want.

You can quickly build a custom run of scaffold as shown on the right. Bays and Ladders can stop short, or go above the deck if needed resulting in a very accurate material list.

Build 2986 Below

The bay labelling feature now provides the option to show the scaffold heights instead of actual RL heights. This represents the top lift minus bottom jack height showing height taking into



account the sloping ground. iScaf represents this with the up/down arrow.

(Available in Metric or Imperial)

Tube handrail at the top of the scaffold will now always follow the ledgers at the top of the scaffold regardless of the number of hand rails, even if there is no deck present.

The iScaf “move wall” feature can now perform a quick global move of the wall in plan which will include all accessories associated with the wall. It will also move all

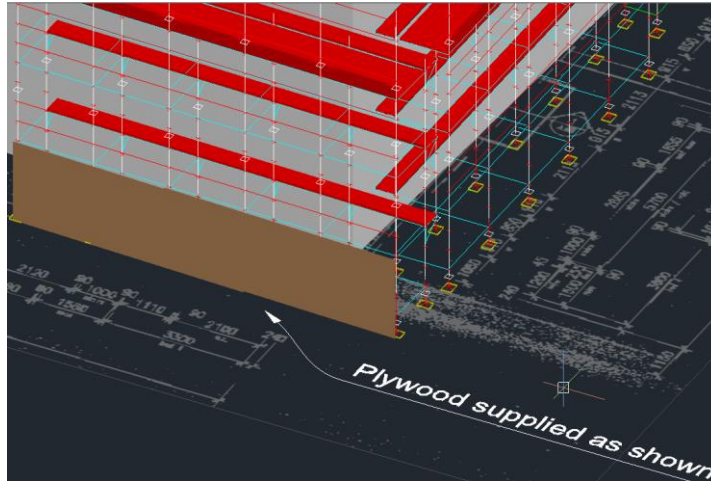
bays in a complex dance floor or bird cage.

The actual 3D “move” in the drawing engine has been modified so that manual 3D edits will include changes to the area/volume calculations. This is great for additional drawing manipulation in 3D. Internally, the “unit’s layer” is turned on for full 3D so the area and volume is moved as well when any scaffold is moved.

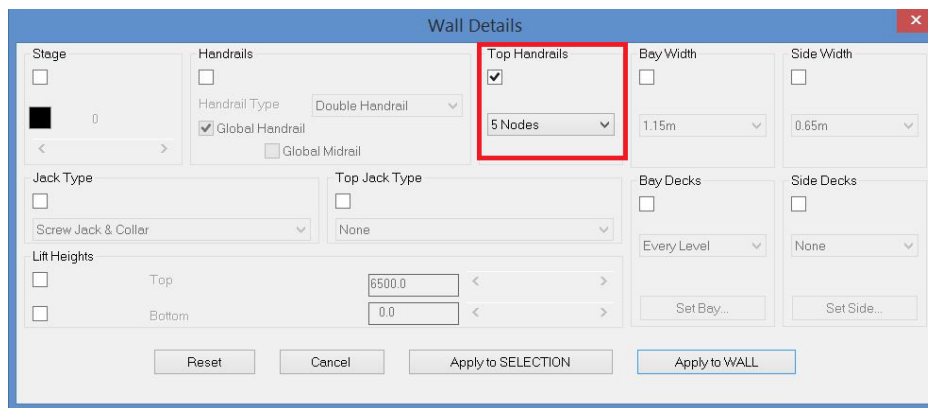
The “offset wall” option is much improved. You can now copy an entire scaffold run; and the command now copies the full bay layout including any handrails, side brackets, bracing and wall ties. Offset wall currently does not copy birdcages/ dance floors but certainly an option we can add for the future.

Great productivity tips for Hoarding and Gantries showing plywood. (Plywood/Line; Thickness; Colour; brown). Hoardings can now look more realistic in 3D for printing.

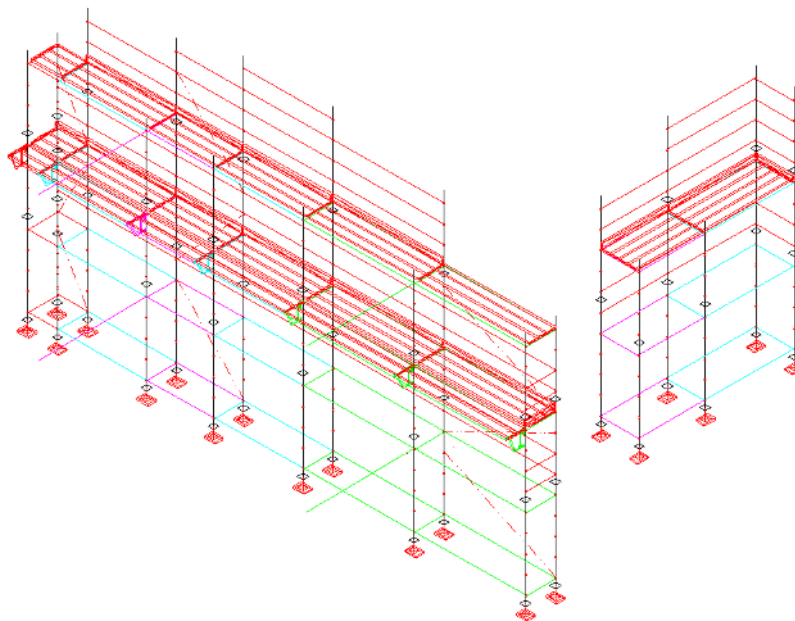




iScaf can quickly set the handrails easily to any number of nodes for roof protection on any bay in the scaffold.



Handrails can be easily removed at the top of your scaffold for any group of bays for total flexibility.



On the plan design, ALL handrails are represented by a thin line just inside the ledgers and cross members.

HTML layout for the quotation is now showing "D S L" (Delivery/Stage/Level) as per the classic quote layout.

The New Block Editor command added to the toolbar now allows for flexible editing of elevations, sections and other blocks. "Bedit" is at the end of the Utilities toolbar.

The new "Chspace" is a useful command that will allow you to move objects and blocks from your main model to the paper space view. This is great for improving your drawing sheet. (Create a viewport with any object. View the objects in a paper space viewport; Click on the object(s) in the viewport window. The object in the viewport becomes an object in the paper space.

Reminder that you should still only have one drawing opened at one time when drawing in iScaf.

Stock descriptions in the item list have been increased to 50 characters.

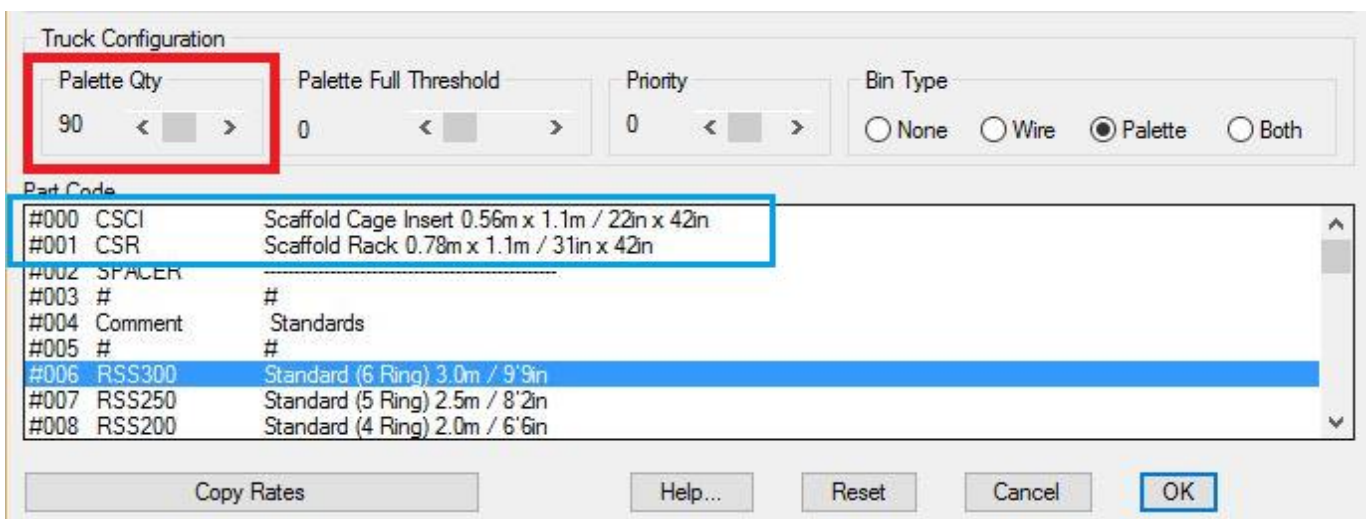
**Palettes, Racks, Stillage or Wire bins (container items)**



Many of our clients are taking advantage of our automatic allocation of **container items**. For example: "Scaffold Rack - 0.78m x 1.1m / 31in x 42in", "Scaffold Pallet" or "Kwikstage Stillage".

There are now new improved options to count these **container items** depending on the total inventory on your quotation. When generating a quotation, these items will be included.

The first step is to allocate the number of items in each **container item** per item code in the stock item configuration menu.



Above: Container item setup

Enter the Full Palette Quantity for each item. Then enter the Palette Full Threshold for each item. This allows you to ship a full **container items** rather than ship a **container items** which is almost full causing the yard employees to remove items from a full **container items** unnecessarily.

Here are the technical details for those who have this iScaf 6.5 release.

Within the iScaf configuration menu, use the miscellaneous option to allocate the following items.

Spacer Item – This allows you to separate wire bin palette or stillage at the bottom of your inventory list. Select an item number that you would like to be a spacer item. Spacer Item “-1” means do not include a spacer item at all.

Palette item – specify the item number for your Palette item code; Wire bin item – specify the item number for your wire bin item code

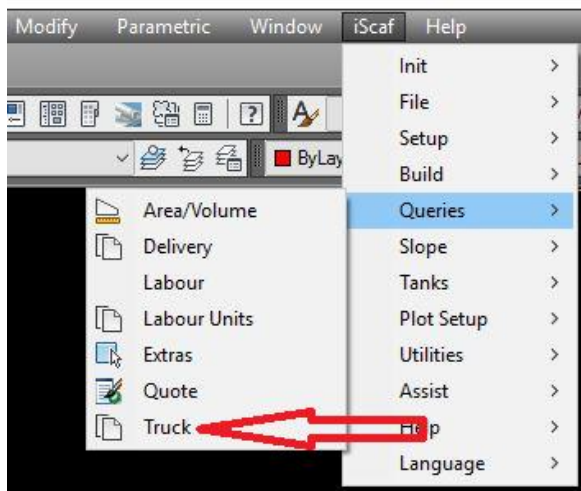
For Example item codes:

CSR “Scaffold Rack - 0.78m x 1.1m / 31in x 42in” (container item to be added automatically)

Or

PALL “Scaffold Pallet” (container item to be added automatically)

When you have drawn your scaffold and ready to quote, use the following menu option to display the allocation in detail.



Truck ✕

Sort Delivery on:  < >    Sort Stage on:  < >    Sort Level on:  < >   

Rate Type:             Adjust:

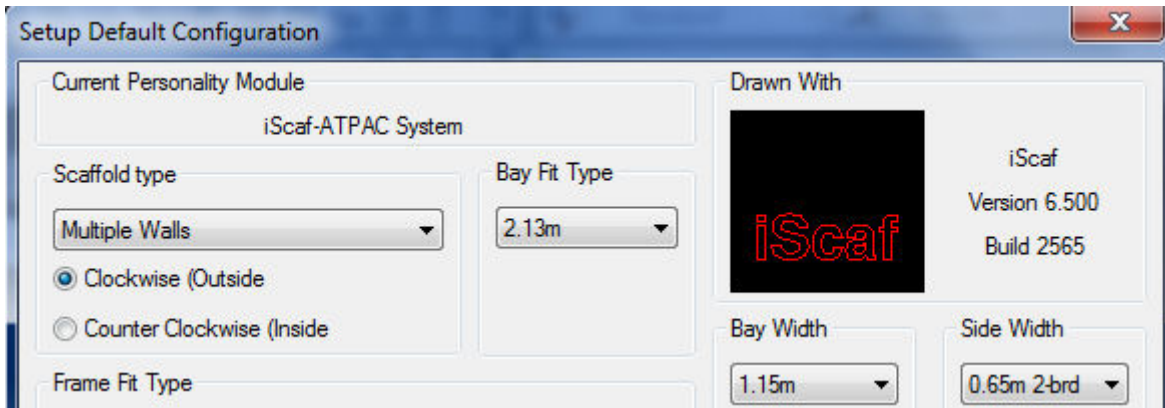
Part Code	Part Description	D	S	L	Qty	Palette	Loose
RSS300	Standard (6 Ring) 3.0m / 9'9in	0	0	0	365	4	5
RSSB065	Side Bracket 2 Board 0.65m / 2'2in	0	0	0	254	3	38
RSSP157	Steel Plank O-Type 1.57m / 5'2in	0	0	0	72	1	22
RSSP182	Steel Plank O-Type 1.82m / 6'0in	0	0	0	28	0	28
RSSP213	Steel Plank O-Type 2.13m / 7'0in	0	0	0	140	2	40
RSSP305	Steel Plank O-Type 3.05m / 10'0in	0	0	0	1680	33	30
SBJ24	Screwjack / Base Jack 0.60m / 2'	0	0	0	94	0	94
SIFP182	Infill Plank 1.82m / 6'0in	0	0	0	2	0	2
SIFP213	Infill Plank 2.13m / 7'0in	0	0	0	2	0	2
SIFP305	Infill Plank 3.05 / 10'0in	0	0	0	8	0	8
SOLE	Sole Board	0	0	0	94	0	94
SSTBL106	Interlocking Toeboard 1.065m / 3'6in	0	0	0	9	0	9
SSTBL115	Interlocking Toeboard 1.15m / 3'10in	0	0	0	4	0	4
SSTBL157	Interlocking Toeboard 1.57m / 5'2in	0	0	0	18	0	18
SSTBL305	Interlocking Toeboard 3.05m / 10'0in	0	0	0	212	2	8
TCTNF0300	Steel Tube without Fittings 300mm /	0	0	0	144	0	144
TCTNF1200	Steel Tube without Fittings 1.2m / 1200mm /	0	0	0	72	0	72
SPACER		0	0	0	0	0	0
CSR	Scaffold Rack 0.78m x 1.1m / 31in x 42in	0	0	0	53	0	0
<b>Totals</b>	<b>Parts 5354</b>	<b>Full Palettes 53</b>			<b>Loose Items 1521</b>		

Above: Sample Material list layout with breakdown of Racks, Pallets, Stillages or Wire Bins (container items)

If you would like further assistance with these options please contact Scaffolding Software.

## iScaf - Design : 6.5 (December, 2015)

This is our new method to deliver quick incremental upgrades to our clients without needing to perform a re-install. This allows us to deliver new features more quickly and easily. The build number allows us to track exactly which version you have installed as shown at the top right corner of your "iScaf Setup".



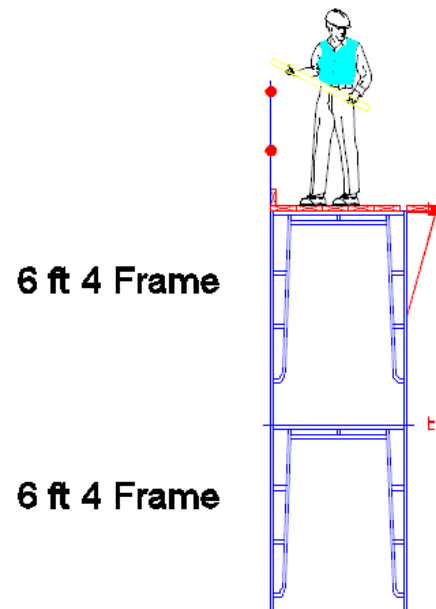
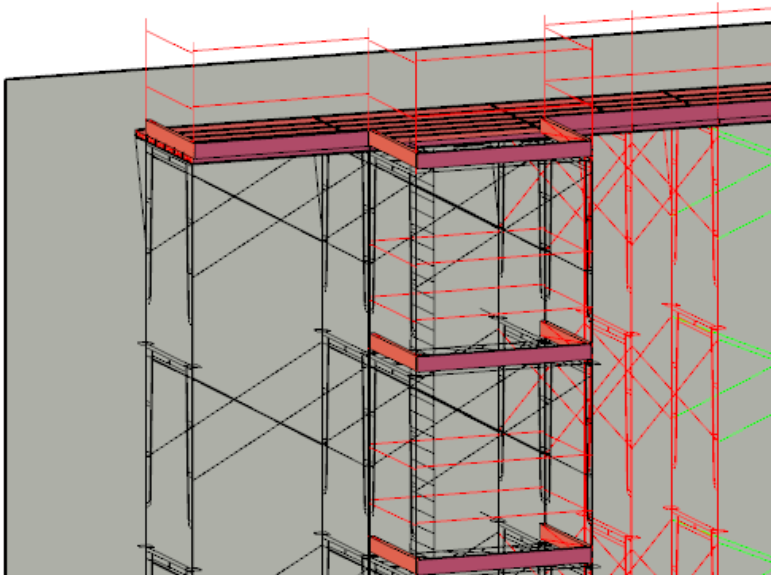
### More Modules

More improved modules including Metric Frame module; Imperial Layher module and more detailed Ringlock systems.

AT-PAC and QUICKALLY have also been greatly enhanced.

### Frames

All upgraded in iScaf 6.5 !





## Other Enhancements in iScaf 6.5 build 2574

Ask about our sort order feature. Higher the priority, higher the number (0 to 99). The Sort order is related to TRK file.

### FILE SHARING

iScaf can now email data files to share or backup your information.

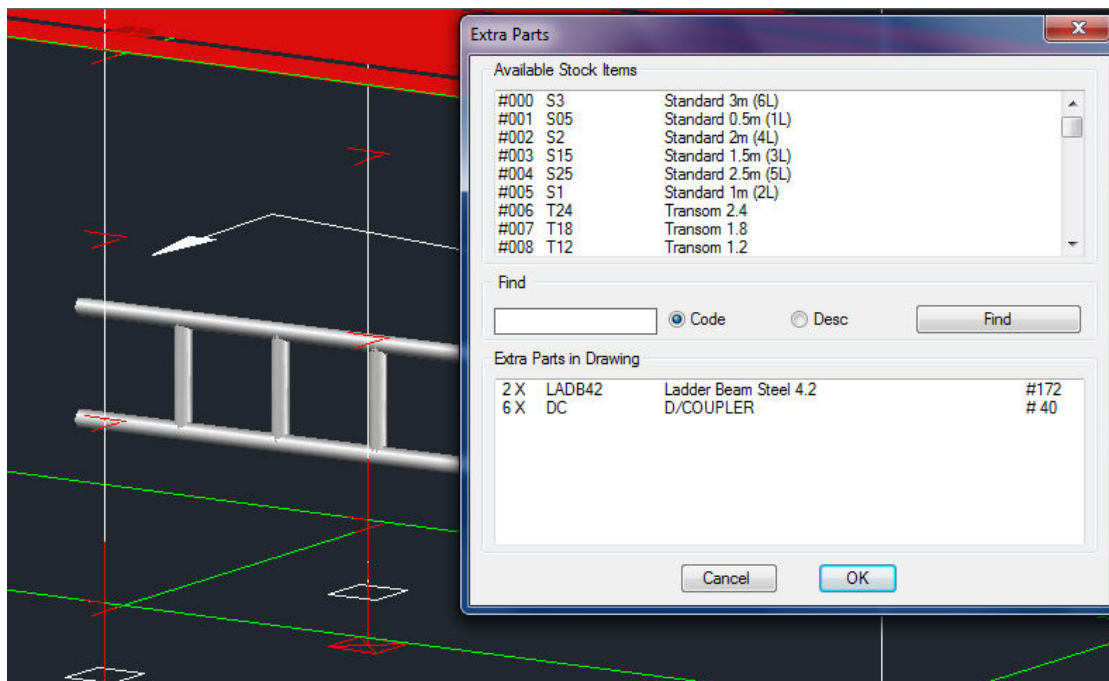
Data files .MOD, \$\$\$ & TRK files can now be emailed with one click. This will work for Outlook or any mapi compliant email.

### Other Items

We made some major improvements to Side Brackets and corners. It's even more refined in the last release for 2015.

The Background building plan brightness can now be more easily controlled via the "Other Setup" and "Transparency" option.

Enhance and build a more detailed set of parts. iScaf Improved "attach custom block" to your material list.

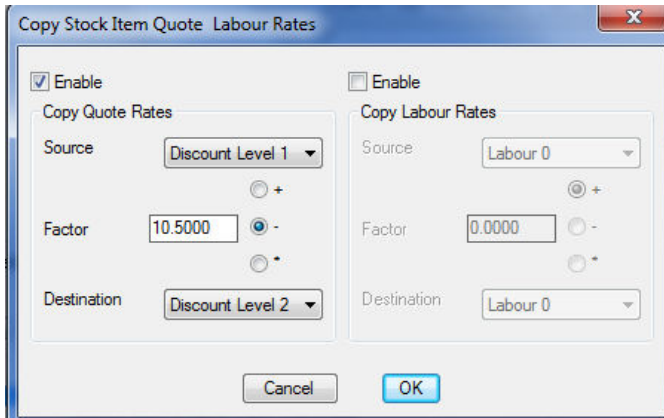


iScaf custom cleaver "Flipx" command has been enhanced with insert point option.

Lap boards will now completely follow the deck setup for any chosen individual bay.

Build section drawings can now build with or without jacks.





Notes in relation to copy rates price changes:

These are all % values (-) Percentage decrease (+) Percentage increase (\*) Factor is actual % of. Eg 90% of original or 55% of original.

In the example, we are copying all rates From "Discount Level 1" to "Discount Level 2" and then decreasing by 10.5%

Bay labelling feature can now include the Stage or Area number where 0=A, 1=B, 2=C etc.

Multi language settings have been improved. . to help export and import a list of strings to change the language and terminology to suit any region: ENGLISH ITALIAN DUTCHGERMAN SPANISH PORTUGESE FRENCH translations already exist.

Module configuration now has "Miscellaneous" options which will allow the total configuration of any item in the module by the end user. A good example to control the general text size for bay labels where: "Bay text size" 300 and "Bay text size small" 150 are good settings. "Symbol Position" is the distance in mm or inches to represent the handrail in plan.

iLabour and iTruck and units have been enabled with html output (same as Quote).

Difficulty factor rate for "units" including "rates" and 14 parameters can now be saved in the module in relation to additional calculations.

## iScaf - Design : 6.5 (August, 2015)

### Windows 10



No Problem! All our software runs on **Windows 10** iScaf is also optimized for 64-bit operating systems.

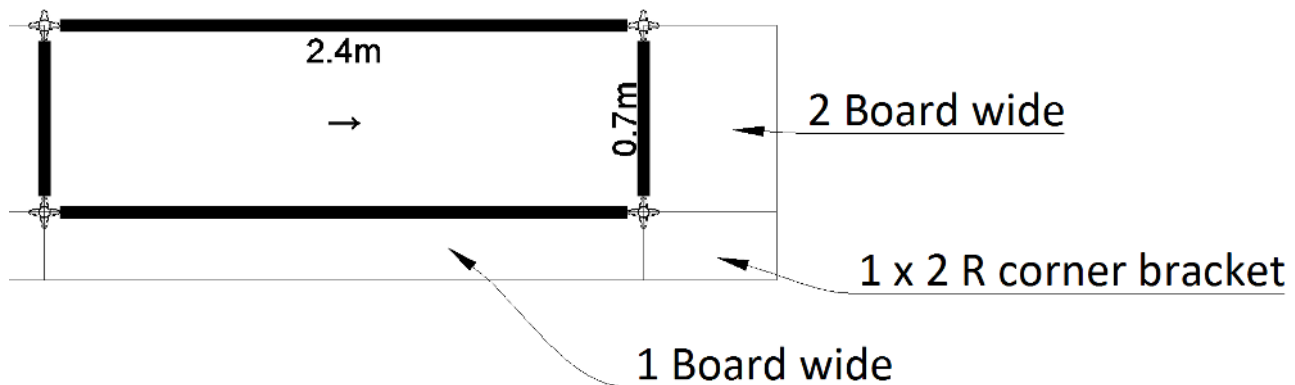
### Plan Design



The plan drawing now contains more solid professional look when zooming in. The plan shows the actual Rosette, V Pressing, Cuplock or any detailed connection point on each standard. New "Bay\_rosette\_style" Styles: -1 donut, 0 cuplock, 1 kwikstage, 2 layher.

### Side Brackets (Hopups)

Ability to mix side brackets sizes on all sides of a single bay. Ability to mix side brackets sizes on as single bay at different elevations and heights. This includes the ability to handle all combinations of corner brackets depending on your scaffold system.



### Custom Components

To enhance your drawings, use our new custom block library, and add your own custom blocks to include with your material list. There are now New blocks to assist with Gantries, Hoardings and Cover ways.

## Training



The iScaf public YouTube channel has been launched with many additional training videos



## Quote Format

Output to our new HTML format to view in your web browser on any device. Email the quote to a colleague. Insert your own company logo using the "Other Setup" option.

## Templates

It is now much easier to create an unlimited number of your own drawing templates in iScaf with custom default settings for different scaffold requirements and styles.

## Other Features

In the Plan, the bay label is now shown on top of any handrail or other symbol for improved clarity.

Bay Labelling now includes stage labelling as A, B, C D etc. for 0, 1, 2, 3 respectively.

Full control is now available for bay labelling font and text size. Bay Labelling is now saved locally during each iScaf session.

There is now an option for "None" for the normal Jack (bottom) Type.

It is now much easier to adjust the background image intensity. Background layer transparency is now in "Other Setup".

Automatic 1 - click email for the current custom module and drawing now available for improved support.

Trap door styles straight or angled can now be adjusted in the module.

Bays which are smaller than 4ft or 0.7m are scaled to show smaller text for improved readability.

Side brackets as handrails are now drawn as solid drawings for improved appearance.

Side bracket handrails previously shown in mid-air will now no longer happen.

iScaf can now control the handrail symbol position distance on the plan. The "Symbol Position" works well now for this and '150' is a good setting.

Edit wall with multiple selection "Unhandled exception error" is now fixed.

Version 6 and above now locks the serial number to the Windows Registry.

## iScaf - Design : 6.02 (December, 2014)

### Solid Building

You can now show a solid building in 3D with the simple menu option. Use Build->"create solid building "; and you plan perimeter will show a solid structure as shown below.



### 3D Ladder Beams and Trusses

You can now show solid 3D ladder beams and trusses in your drawings straight out of the box. In addition to the Fast Edit mode, where you can use the "Truss" option, you can now insert Solid 3D ladder beams into your drawings.

Use the Pull down menu "insert"->"block" and you can browse the "bonus" folder in iScaf for Metric and Imperial library for these Ladder Beams, Lattice Beams and Trusses.

You can use this on your 3D drawing and you can also use the new "Flipx" toolbar option to show the item correctly on a side elevation if you decide to add it later.

### New block Library and Custom Part Library

You can now use the Pull down menu to "insert"->"block" and you can browse the "bonus" folder in iScaf for Metric and Imperial library drawings that now come with the system. In addition to this, you can create and add to this library yourself and attach your part numbers, descriptions with weight and pricing to each block.

### Improved Prompting

The system will help you by asking questions right where your mouse is so you know what to do next.

### Birdcages/Dance floors

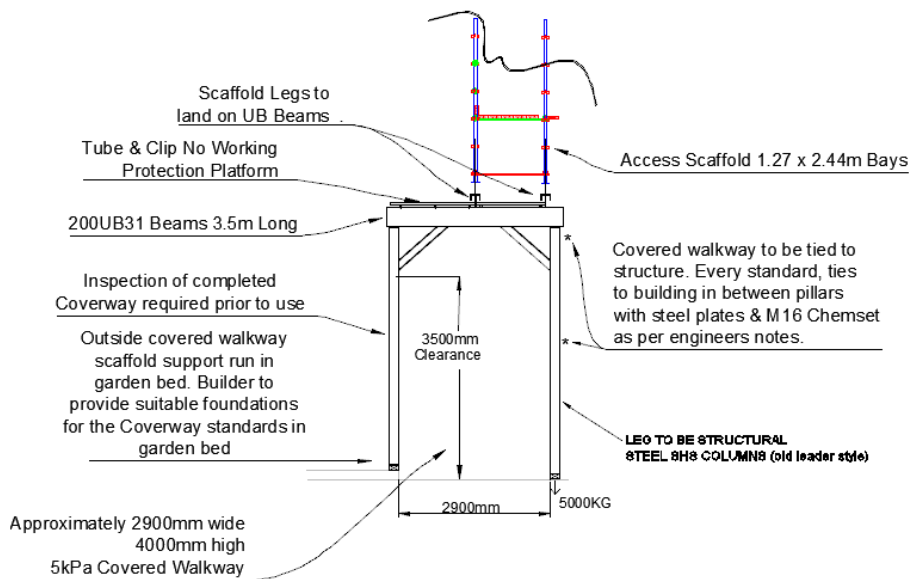
New Area/Fill command is the new shortcut method which will allow you to fill a rectangular area with scaffold with just a few simple clicks.

### Great new toolbar options to easily annotate your drawing

We now have easy shortcuts to create great looking Arrows & Text boxes to label and annotate your drawing.

## Improve your section and side elevations

Use the improved BEDIT option and Join Section Image option to improve your side elevations to show how the scaffold needs to be built.



## Multiple top handrails

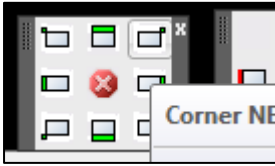
Easily edit the external top handrail height on any bay and extend the outside vertical to allow for as many handrails as you need. This is excellent for custom Roof Protection requirements.

In 2015, iScaf will extend this feature for tube and clamp hand rails.



## iScaf - Design : 2.5.539 (June, 2014)

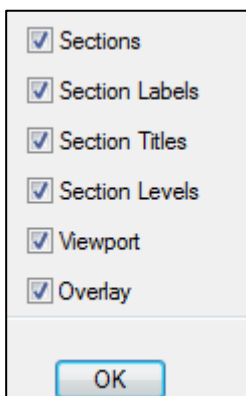
### Toolbars



New toolbars were introduced at the end of 2013; and improved further in 2014. A great user interface improvement which really assists new users in their learning of the system.



### Layers



This feature allows you to easily turn on and off different parts of the drawing. Simply click on our toolbar option then use the check boxes to turn off the background image or other parts of your drawing as required.

### Performance



Speed improvements provide even greater productivity gains when working with very large scaffold jobs.

### Import PDF



Insert a PDF of architectural drawings to scale, directly from the toolbar. You can easily trim the PDF and change the intensity of the background image to suit your requirements.

### Bay Labelling

“Bay Numbering” functions have been enhanced and given the new title “Bay Labelling”. A new feature here also allows you to optionally show the width of the bay.

## PDF in and OUT with scaffold



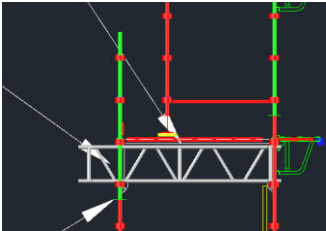
New techniques and settings allow you to streamline your final output as a PDF file showing the background image of building with scaffold and full side and face elevations showing the building.

## Improved Lap Boards

The connection bay in between Tanks is now more clearly displayed in the Plan view, with connecting tube/clamp.

If you need to lap from a ladder bay, each Lap inherits the deck properties of the ladder bay.

## Trusses/Ladder Beams



Additional styles are provided for Ladder Beams; an improvement which brings the total available Ladder Beam/Truss styles to nine.

## Toe Boards

These can now be configured to start at any height, since scaffold may not need Toe Boards at lower levels as per your requirements.

## User Manual

Our software is always being enhanced. These changes, while great for our customers, always manage to infuriate our staff because we have to work hard to keep the User Guide up-to-date! A new and improved User Manual (available on request) has been created to supplement the existing **Training Videos**.

## New Ladder Styles

We have added Ladder Style 8, which uses only 3.6 meter and 3.0 meter ladders, providing conformance to the requirements in NSW Australia.

Ladder top down with 2 meter lifts allows the user to fill in the bottom with custom components, if an odd height needs to be allowed for.

Ladder style 7 was a custom improvement for our Canadian marketplace.

## Elevation Section Markers

These can now be mirrored for End Sections and Face Sections, allowing elevation cuts to be visible from Front, Back, Left or Right on any scaffold run or bay.

## Actual RL Levels

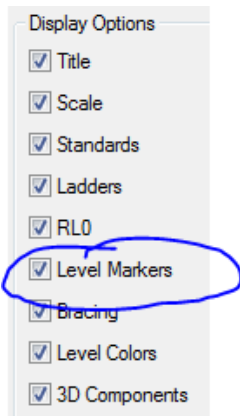
The scaffold drawing can now map to the RL levels shown on your original architectural drawings and those shown on the scaffold elevations. These are automatically generated.

**How do you do this?**

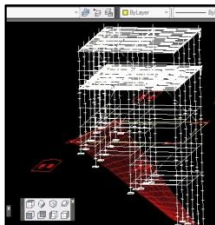
In Extra Setup, the RL Offset option at the bottom right corner of this window allows you to map the RL in the CAD drawing to the actual RL levels. Then, at the time of building the sections in 3D or manual section, this mapping will take place.

To show this mapping when you define the section, check the box to show the “Level Markers”.

When you display the elevation section as normal, you should see the section with the RL including the actual RL levels.

**Birdcages/Dance floors**

These have been enhanced so that C, U, & N shaped structures now operate as expected during Build 3D and Quote functions. This greatly improves accuracy during the creation of these “Odd” structures.

**Surface Mesh & Add slope**

We have improved this function to conform to any sloping ground surface in 3D. This also works with the updated Attach Slope menu option.

**Aluminium Stair**

For Australia, we have added a third Aluminium Stair option which builds from the bottom-up instead of top-down. As normal, the user can adjust the height to decide the stair finishing point, allowing for maximum stair flexibility independent of the scaffold. This option adds to our extensive library of Stairs and Ladders.

**Make Scaffold Wall**

In addition to the Standard Auto Build plan option, we have provided a much-improved “Make Scaffold Wall” feature; with the following enhancements:

- Auto Straight Wall option
- Optional Offset feature
- Define Number Bays

We've added a new check box, allowing you to offset against walls in a Vector PDF file. This feature is useful when creating a direct drawing of scaffold on a PDF file; laying out the bays without the need for drawing a plan line.

## Negative extras

This feature allows you to manually remove a fixed number of items on a drawing, improving the accuracy of the Final Material list. This is a useful special technique for aluminium component swap outs.

## Saving Files

We have merged the "File Save" and "Save As" toolbars, improving your accessibility to all save options for revision history.

## The "Donut"

We have made some recent changes to remove the "Donut", representing the standards in between the ledgers in the Plan view, as a default option. Based on recent feedback, this is not always desired. The current quick fix for this is to rename "\_BAY\_0a" to "\_BAY\_0a\_backup" and then rename "\_BAY\_0" to "\_BAY\_0a" in the iScaf->parts folder.

An easier selection option will be available in the next release.

The added benefit here is that you can separately edit "\_BAY\_0a" in the part library to customise the look and feel of the bay style. Backup the file first and give it a try!

## Optional Internal handrail

Now stays correctly when the bay size is changed.

## "Base" Command

This command can be used for specifying the insert point of any block; helpful when you are creating end user custom parts and title block definitions.

## Title Block Tips

Here is another method to modify your company template:

Lay out the drawing sheet as normal

Make sure your logo artwork is in the "parts" and "titleblk" folder

Type "Bedit"

Click on the block name, click OK

Insert raster image reference and select your company logo

For "Path type" select "No Path"

Stretch and place your logo as normal

Edit as needed

Finish with "Close Block Editor"

Type "wblock" for "Source" select "Block"

Save to the title block folder with the name of your choice

## iScaf - Design 2.5.538 (May, 2014)

### Custom Parts

Create User Custom Part has now been included in toolbar menus alongside the Add Generic Custom Part & Add User Custom Part commands.

### Scaffolding Arcs

Any arc can be scaffolded as part of standard arc command or usual "draw perimeter" option.

### Heavy Duty Transoms

The choice of heavy duty transoms can be used for wider bays. These items can be defined in your part count in your custom module.



## iScaf - Design 2.0 (January, 2014)

### **New Toolbars**

iScaf design can now work exclusively with new toolbars. This is a great user interface improvement, allowing quicker learning for new users.

### **Drawing Display Options**

You now have the ability to turn on and off display for different parts of the drawing.

### **Enhanced Speed**

Speed improvements provide even greater productivity when working with very large scaffold jobs.

### **Optional Built-In CAD**

You no longer need to purchase AutoCAD separately to use iScaf – Design.

### **Background Imaging**

You can now insert a PDF image file to scale and trim directly from the toolbar with ability to change the intensity of the background image.

## New Training Topics (October, 2013)

Below is a list of the latest training topics and new features:

- Levels and Stages
- Inserting a building image from PDF or TIFF file external drawing, tracing your building around that image and then scaffolding it!
- joining an elevation with a background image on drawing, for side elevation
- module change to handle solid hop ups/side brackets for elevations and sections
- making your building outline look like a real solid building
- changing the colours on your plan to your own custom colours
- trusses/ladder beams
- advanced title block setup
- configuring the personality module
- making backups
- advanced ladder towers and stair units (mainly for Canada)
- building dance floors/bird cages
- tanks
- extras
- lift control
- achieving greater accuracy with parts list quantities
- bay numbering
- command prompt techniques
- changing the module to assist with bug fixes
- building the AI stair at different heights to cater for odd heights using the design top down build feature

## **iScaf - Design (July, 2013)**

### **Moving Scaffold Man**

New Scaffold man can now be moved within your design to show on an elevation.

### **Section Labels Positioning**

The default positioning of the Section labels can be changed depending on your company requirements.